

For Research Use Only

ZG16 Polyclonal antibody

Catalog Number: 17397-1-AP

2 Publications



Basic Information

Catalog Number:

17397-1-AP

Concentration:

400 ug/ml

Source:

Rabbit

Isotype:

IgG

Immunogen Catalog Number:

AG11332

GenBank Accession Number:

BC029149

GeneID (NCBI):

653808

UNIPROT ID:

O60844

Full Name:

zymogen granule protein 16 homolog (rat)

Calculated MW:

167 aa, 18 kDa

Observed MW:

16 kDa

Purification Method:

Antigen affinity purification

Recommended Dilutions:

WB 1:300-1:600

IHC 1:50-1:500

IF-P 1:50-1:500

IF-Fro 1:50-1:500

Applications

Tested Applications:

WB, IHC, IF-P, IF-Fro, ELISA

Cited Applications:

WB, IF

Species Specificity:

human, mouse

Cited Species:

human, mouse

Note-IHC: suggested antigen retrieval with TE buffer pH 9.0; (*) Alternatively, antigen retrieval may be performed with citrate buffer pH 6.0

Positive Controls:

WB : human colon tissue, mouse colon tissue

IHC : mouse pancreas tissue, human colon cancer tissue, human pancreas tissue, mouse colon tissue, mouse small intestine tissue

IF-P : mouse small intestine tissue,

IF-Fro : mouse small intestine tissue,

Background Information

Zymogen granule protein 16 (ZG16) has a Jacalin-like lectin domain, which is mainly expressed by mucus-secreting cells, including goblet cells in the intestine. It's reported that ZG16 expression was significantly decreased in colorectal cancer compared to normal tissue. ZG16 gene expression and copy number variations (CNV) were associated with multiple molecular and clinicopathological features of CRC including MSI, MLH1 silencing and so on. It's found that ZG16 is negatively correlated with lymphatic invasive and distant metastasis. Besides, overexpression of ZG16 blocks PD-L1 expression in colorectal cancer, and promotes NK cells survival and proliferation. Very importantly, ZG16 suppresses colorectal tumor growth via the immune system. (PMID: 33360840, 21893569)

Notable Publications

Author	Pubmed ID	Journal	Application
Jiaoli Lan	38889269	Adv Sci (Weinh)	WB,IF
Tae-Yoon Park	37438521	Nature	WB

Storage

Storage:

Store at -20°C. Stable for one year after shipment.

Storage Buffer:

PBS with 0.02% sodium azide and 50% glycerol, pH7.3

Aliquoting is unnecessary for -20°C storage

For technical support and original validation data for this product please contact:

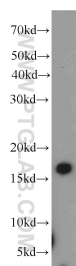
T: 4006900926

E: Proteintech-CN@ptglab.com

W: ptgcn.com

This product is exclusively available under Proteintech Group brand and is not available to purchase from any other manufacturer.

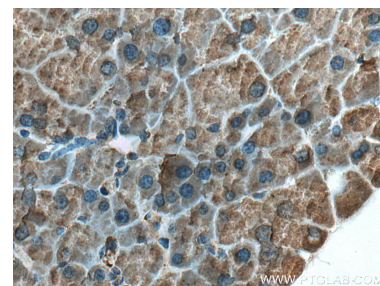
Selected Validation Data



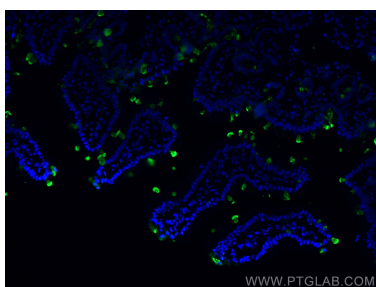
human colon tissue were subjected to SDS PAGE followed by western blot with 17397-1-AP (ZG16 antibody) at dilution of 1:500 incubated at room temperature for 1.5 hours.



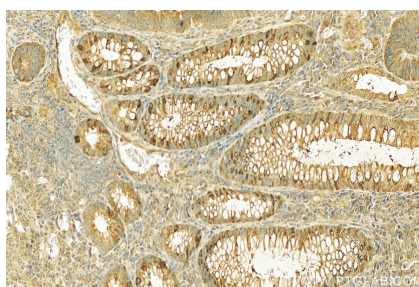
Immunohistochemical analysis of paraffin-embedded mouse pancreas tissue slide using 17397-1-AP (ZG16 antibody) at dilution of 1:200 (under 10x lens). Heat mediated antigen retrieval with Tris-EDTA buffer (pH 9.0).



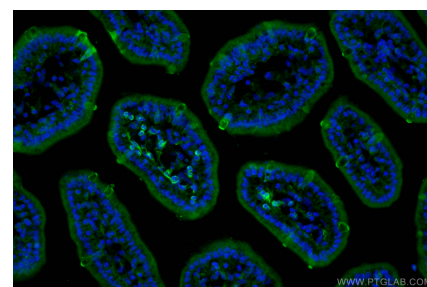
Immunohistochemical analysis of paraffin-embedded mouse pancreas tissue slide using 17397-1-AP (ZG16 antibody) at dilution of 1:200 (under 40x lens). Heat mediated antigen retrieval with Tris-EDTA buffer (pH 9.0).



Immunofluorescent analysis of (4% PFA) fixed mouse small intestine tissue using ZG16 antibody (17397-1-AP) at dilution of 1:200 and CoraLite®488-Conjugated AffiniPure Goat Anti-Rabbit IgG(H+L).



Immunohistochemical analysis of paraffin-embedded Colorectal cancer slide using 17397-1-AP (ZG16 antibody) at dilution of 1:200 (under 20x lens). Heat mediated antigen retrieval with Tris-EDTA buffer (pH 9.0).



Immunofluorescent analysis of (4% PFA) fixed frozen OCT-embedded mouse small intestine tissue using 17397-1-AP (ZG16 antibody) at dilution of 1:200 and CoraLite®488-Conjugated AffiniPure Goat Anti-Rabbit IgG(H+L).