

For Research Use Only

# CPNE7 Polyclonal antibody

Catalog Number: 17396-1-AP

Featured Product

3 Publications



## Basic Information

Catalog Number:

17396-1-AP

Concentration:

400 µg/ml

Source:

Rabbit

Isotype:

IgG

Immunogen Catalog Number:

AG11313

GenBank Accession Number:

BC035334

GeneID (NCBI):

27132

UNIPROT ID:

Q9UBL6

Full Name:

copine VII

Calculated MW:

558 aa, 62 kDa

Observed MW:

65-70 kDa

Purification Method:

Antigen affinity purification

Recommended Dilutions:

WB: 1:1000-1:8000

## Applications

Tested Applications:

WB, ELISA

Cited Applications:

WB

Species Specificity:

human, mouse, rat

Cited Species:

human

Positive Controls:

WB : COLO 320 cells, mouse brain tissue, rat brain tissue

## Background Information

Copines are a family of evolutionarily conserved calcium-dependent phospholipid-binding proteins (PMID: 9430674). They contain two Ca(2+)- and phospholipid-binding domains known as C2 domains. Copines are potentially involved in regulating membrane trafficking and in protein-protein interactions.

## Notable Publications

Author	Pubmed ID	Journal	Application
Liangbo Zhao	39695095	Cell Death Dis	WB
Tianwen Yu	37469397	Front Oncol	WB
Tianwei Chen	36453019	Mol Oncol	WB

## Storage

Storage:

Store at -20°C. Stable for one year after shipment.

Storage Buffer:

PBS with 0.02% sodium azide and 50% glycerol, pH7.3

Aliquoting is unnecessary for -20°C storage

For technical support and original validation data for this product please contact:

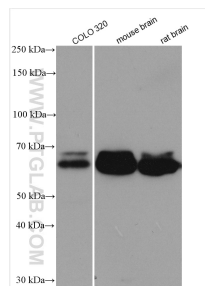
T: 4006900926

E: [Proteintech-CN@ptglab.com](mailto:Proteintech-CN@ptglab.com)

W: [ptgcn.com](http://ptgcn.com)

This product is exclusively available under Proteintech Group brand and is not available to purchase from any other manufacturer.

## Selected Validation Data



Various lysates were subjected to SDS PAGE followed by western blot with 17396-1-AP (CPNE7 antibody) at dilution of 1:4000 incubated at room temperature for 1.5 hours.