

For Research Use Only

# SAMD4A Polyclonal antibody

Catalog Number: 17387-1-AP

Featured Product

3 Publications



## Basic Information

**Catalog Number:**

17387-1-AP

**Size:**

400 µg/ml

**Source:**

Rabbit

**Isotype:**

IgG

**Immunogen Catalog Number:**

AG11273

**GenBank Accession Number:**

BC021726

**GeneID (NCBI):**

23034

**UNIPROT ID:**

Q9UPU9

**Full Name:**

sterile alpha motif domain containing 4A

**Calculated MW:**

529 aa, 59 kDa

**Observed MW:**

70 kDa

**Purification Method:**

Antigen affinity purification

**Recommended Dilutions:**

WB 1:500-1:1000

IP 0.5-4.0 µg for 1.0-3.0 mg of total protein lysate

IHC 1:20-1:200

## Applications

**Tested Applications:**

IHC, IP, WB, ELISA

**Cited Applications:**

WB, IHC

**Species Specificity:**

human, mouse, rat

**Cited Species:**

human, mouse

**Note-IHC: suggested antigen retrieval with TE buffer pH 9.0; (\*) Alternatively, antigen retrieval may be performed with citrate buffer pH 6.0**

**Positive Controls:**

**WB:** mouse skeletal muscle tissue, mouse heart tissue

**IP:** mouse skeletal muscle tissue,

**IHC:** human spleen tissue, human kidney tissue, human lung tissue, human ovary tissue, human testis tissue

## Background Information

### Notable Publications

Author	Pubmed ID	Journal	Application
Yuze Wang	32341522	Cell Mol Immunol	WB
Changliang Liu	37507781	J Neuroinflammation	WB
Deqin Li	37515967	Tissue Cell	IHC,WB

## Storage

**Storage:**

Store at -20°C. Stable for one year after shipment.

**Storage Buffer:**

PBS with 0.02% sodium azide and 50% glycerol pH 7.3.

Aliquoting is unnecessary for -20°C storage

For technical support and original validation data for this product please contact:

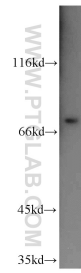
T: 4006900926

E: Proteintech-CN@ptglab.com

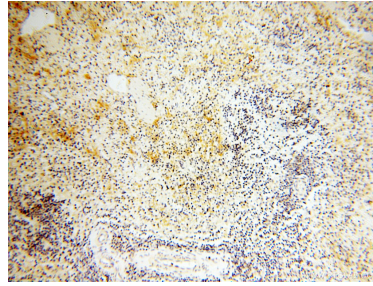
W: ptgcn.com

**This product is exclusively available under Proteintech Group brand and is not available to purchase from any other manufacturer.**

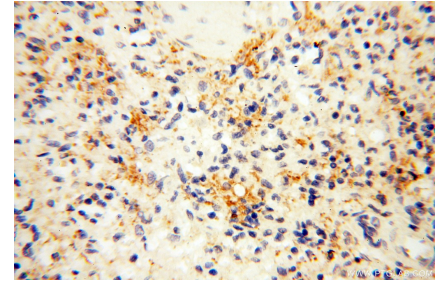
## Selected Validation Data



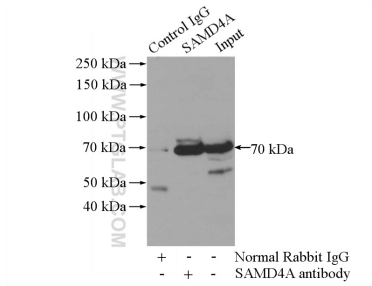
mouse skeletal muscle tissue were subjected to SDS PAGE followed by western blot with 17387-1-AP (SAM4A antibody) at dilution of 1:500 incubated at room temperature for 1.5 hours.



Immunohistochemical analysis of paraffin-embedded human spleen using 17387-1-AP (SAM4A antibody) at dilution of 1:100 (under 10x lens).



Immunohistochemical analysis of paraffin-embedded human spleen using 17387-1-AP (SAM4A antibody) at dilution of 1:100 (under 40x lens).



IP result of anti-SAM4A (IP:17387-1-AP, 4ug; Detection:17387-1-AP 1:500) with mouse skeletal muscle tissue lysate 2200ug.