

# TCP11L2 Polyclonal antibody

Catalog Number: 17377-1-AP

## Basic Information

**Catalog Number:**

17377-1-AP

**Size:**

500 µg/ml

**Source:**

Rabbit

**Isotype:**

IgG

**Immunogen Catalog Number:**

AG11185

**GenBank Accession Number:**

BC033617

**GeneID (NCBI):**

255394

**UNIPROT ID:**

Q8N4U5

**Full Name:**

t-complex 11 (mouse)-like 2

**Calculated MW:**

519 aa, 58 kDa

**Observed MW:**

60-70 kDa

**Purification Method:**

Antigen affinity purification

**Recommended Dilutions:**

WB 1:1000-1:8000

## Applications

**Tested Applications:**

WB, ELISA

**Species Specificity:**

human

**Positive Controls:**

WB : SH-SY5Y cells, U-87 MG cells

## Background Information

TCP11L2 is a protein containing a serine-rich region in its N-terminal region. It is a member of the TCP11 family, which includes SOK1, TCP11L1, and TCP11L2. TCP11L2 has a role in the migration and differentiation of skeletal muscle-derived satellite cells. It has been shown that Tcp11l2 expression gradually increased during the differentiation of bovine muscle-derived satellite cells. (PMID: 32017087)

## Storage

**Storage:**

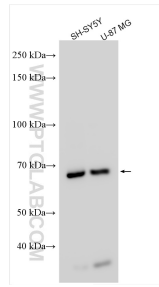
Store at -20°C. Stable for one year after shipment.

**Storage Buffer:**

PBS with 0.02% sodium azide and 50% glycerol pH 7.3.

Aliquoting is unnecessary for -20°C storage

## Selected Validation Data



Various lysates were subjected to SDS PAGE followed by western blot with 17377-1-AP (TCP11L2 antibody) at dilution of 1:4000 incubated at room temperature for 1.5 hours.