

For Research Use Only

# TEX10 Polyclonal antibody

Catalog Number: 17372-1-AP

Featured Product

11 Publications



## Basic Information

**Catalog Number:**

17372-1-AP

**Size:**

500 µg/ml

**Source:**

Rabbit

**Isotype:**

IgG

**Immunogen Catalog Number:**

AG11014

**GenBank Accession Number:**

BC030652

**GeneID (NCBI):**

54881

**UNIPROT ID:**

Q9NXF1

**Full Name:**

testis expressed 10

**Calculated MW:**

929 aa, 106 kDa

**Observed MW:**

95-100 kDa

**Purification Method:**

Antigen affinity purification

**Recommended Dilutions:**

WB 1:500-1:2000

IHC 1:20-1:200

IF 1:20-1:200

## Applications

**Tested Applications:**

IF/ICC, IHC, WB, ELISA

**Cited Applications:**

WB, IP, IF, IHC

**Species Specificity:**

human, mouse, rat

**Cited Species:**

human

**Note-IHC: suggested antigen retrieval with TE buffer pH 9.0; (\*) Alternatively, antigen retrieval may be performed with citrate buffer pH 6.0**

**Positive Controls:**

WB : HeLa cells,

IHC : human brain tissue,

IF : HeLa cells,

## Background Information

TEX10 is a component of some MLL1/MLL complex, at least composed of the core components MLL, ASH2L, HCFC1/HCF1, WDR5 and RBBP5. PELP1-TEX10-WDR18 complex is a regulator of ribosome biogenesis and suggests that its SUMO-controlled distribution coordinates the rate of ribosome formation. And this complex is required for the maturation and nucleolar release of the large ribosomal subunit. (PMID:21326211)

## Notable Publications

Author	Pubmed ID	Journal	Application
Xiaocong Xiang	31638260	Oncol Rep	WB,IHC
Xiaocong Xiang	30045663	Cell Cycle	WB,IHC,IF
Jian Zhou	35219000	Biochem Biophys Res Commun	WB

## Storage

**Storage:**

Store at -20°C. Stable for one year after shipment.

**Storage Buffer:**

PBS with 0.02% sodium azide and 50% glycerol pH 7.3.

Aliquoting is unnecessary for -20°C storage

For technical support and original validation data for this product please contact:

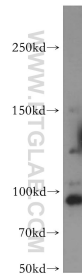
T: 4006900926

E: Proteintech-CN@ptglab.com

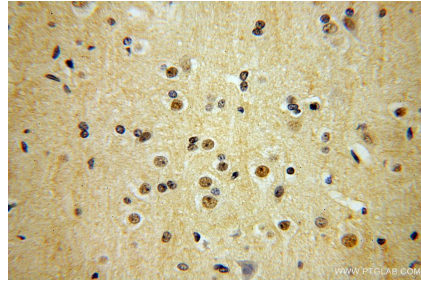
W: ptgcn.com

This product is exclusively available under Proteintech Group brand and is not available to purchase from any other manufacturer.

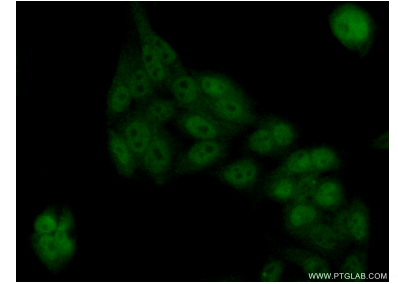
## Selected Validation Data



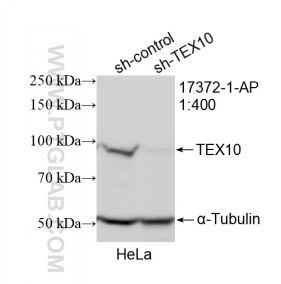
HeLa cells were subjected to SDS PAGE followed by western blot with 17372-1-AP (TEX10 antibody) at dilution of 1:500 incubated at room temperature for 1.5 hours.



Immunohistochemical analysis of paraffin-embedded human brain using 17372-1-AP (TEX10 antibody) at dilution of 1:200 (under 40x lens).



Immunofluorescent analysis of (10% Formaldehyde) fixed HeLa cells using 17372-1-AP (TEX10 antibody) at dilution of 1:50 and Alexa Fluor 488-conjugated AffiniPure Goat Anti-Rabbit IgG(H+L).



WB result of TEX10 antibody (17372-1-AP; 1:400; incubated at room temperature for 1.5 hours) with sh-Control and sh-TEX10 transfected HeLa cells.