

For Research Use Only

# CHDH Polyclonal antibody

Catalog Number: 17356-1-AP

Featured Product

6 Publications



## Basic Information

### Catalog Number:

17356-1-AP

### Size:

450 µg/ml

### Source:

Rabbit

### Isotype:

IgG

### Immunogen Catalog Number:

AG10614

### GenBank Accession Number:

BC034502

### GeneID (NCBI):

55349

### UNIPROT ID:

Q8NE62

### Full Name:

choline dehydrogenase

### Calculated MW:

594 aa, 65 kDa

### Observed MW:

60 kDa

### Purification Method:

Antigen affinity purification

### Recommended Dilutions:

WB 1:2000-1:6000

IHC 1:50-1:500

## Applications

### Tested Applications:

IHC, WB, ELISA

### Cited Applications:

WB, IHC, IF

### Species Specificity:

human, mouse, rat

### Cited Species:

human, mouse

**Note-IHC: suggested antigen retrieval with TE buffer pH 9.0; (\*) Alternatively, antigen retrieval may be performed with citrate buffer pH 6.0**

### Positive Controls:

**WB** : rat liver tissue, mouse kidney tissue, mouse liver tissue

**IHC** : human liver cancer tissue,

## Background Information

CHDH(Choline dehydrogenase, mitochondrial) is also named as CDH, CHD and belongs to the GMC oxidoreductase family. CHDH is a member of the glucose-methanol-choline family of oxidoreductases, with each member containing a consensus FAD-binding domain. Many members of this oxidoreductase family are soluble proteins but mammalian CHDH is associated with the inner mitochondrial membrane (Handbook of vitamins, Robert B, 2007). The full length protein (65 kDa) has a transit peptide of 29 amino acid and the mature CHDH is appropriately located in the inner mitochondrial membrane (PMID:12951056). 17356-1-AP can also recognize the 45 kDa isoform X3 of CHDH.

## Notable Publications

Author	Pubmed ID	Journal	Application
Taylor McClatchie	28663368	J Biol Chem	WB
Johnson Amy R AR	22558321	PLoS One	IHC
Xuyong Wei	35430532	Transl Oncol	IHC

## Storage

### Storage:

Store at -20°C. Stable for one year after shipment.

### Storage Buffer:

PBS with 0.02% sodium azide and 50% glycerol pH 7.3.

Aliquoting is unnecessary for -20°C storage

For technical support and original validation data for this product please contact:

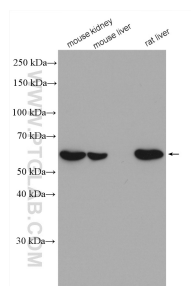
T: 4006900926

E: [Proteintech-CN@ptglab.com](mailto:Proteintech-CN@ptglab.com)

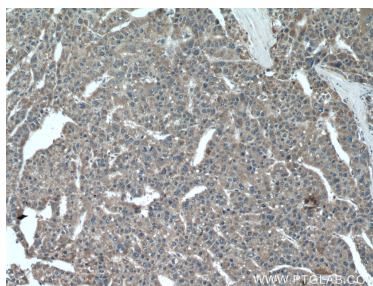
W: [ptgcn.com](http://ptgcn.com)

**This product is exclusively available under Proteintech Group brand and is not available to purchase from any other manufacturer.**

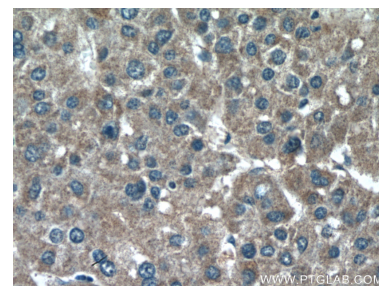
## Selected Validation Data



Various lysates were subjected to SDS PAGE followed by western blot with 17356-1-AP (CHDH antibody) at dilution of 1:5000 incubated at room temperature for 1.5 hours.



Immunohistochemical analysis of paraffin-embedded human liver cancer tissue slide using 17356-1-AP (CHDH antibody) at dilution of 1:200 (under 10x lens).



Immunohistochemical analysis of paraffin-embedded human liver cancer tissue slide using 17356-1-AP (CHDH antibody) at dilution of 1:200 (under 40x lens).