

For Research Use Only

EFHB Polyclonal antibody, PBS Only

Catalog Number:17352-1-PBS



Basic Information

Catalog Number: 17352-1-PBS	GenBank Accession Number: BC028198	Purification Method: Antigen affinity purification
Concentration: 1 mg/ml	GeneID (NCBI): 151651	
Source: Rabbit	UNIPROT ID: Q8N7U6	
Isotype: IgG	Full Name: EF-hand domain family, member B	
Immunogen Catalog Number: AG11431	Calculated MW: 669aa,76 kDa; 831aa,94 kDa	

Applications

Tested Applications:
IHC, IF-P, Indirect ELISA

Species Specificity:
human, mouse

Background Information

EFHB (EF-hand domain family member B, also known as CFAP21) interacts with Orai1 in a Ca²⁺-dependent manner. Human EFHB is an 833-amino acid cytosolic protein with two EF-hand domains between amino acids 561-596 and 597-632 (PMID: 34439314).

Storage

Storage:
Store at -80°C.
The product is shipped with ice packs. Upon receipt, store it immediately at -80°C

Storage Buffer:
PBS only, pH7.3

For technical support and original validation data for this product please contact:

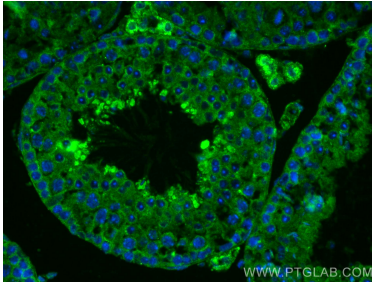
T: 4006900926

E: Proteintech-CN@ptglab.com

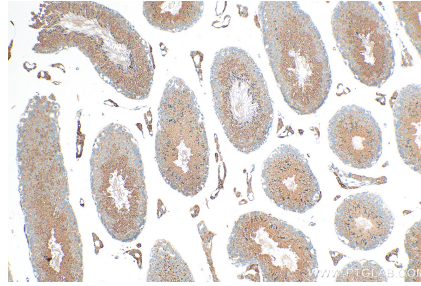
W: ptgcn.com

This product is exclusively available under Proteintech Group brand and is not available to purchase from any other manufacturer.

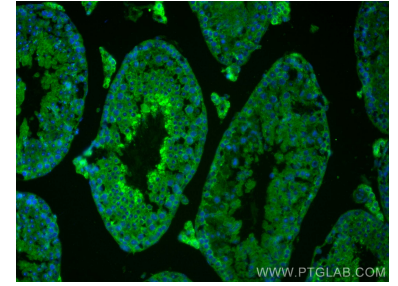
Selected Validation Data



Immunofluorescent analysis of (4% PFA) fixed mouse testis tissue using EFHB antibody (17352-1-AP) at dilution of 1:200 and CoraLite®488-Conjugated AffiniPure Goat Anti-Rabbit IgG(H+L). This data was developed using the same antibody clone with 17352-1-PBS in a different storage buffer formulation.



Immunohistochemical analysis of paraffin-embedded mouse testis tissue slide using 17352-1-AP (EFHB antibody) at dilution of 1:200 (under 10x lens). Heat mediated antigen retrieval with Tris-EDTA buffer (pH 9.0). This data was developed using the same antibody clone with 17352-1-PBS in a different storage buffer formulation.



Immunofluorescent analysis of (4% PFA) fixed mouse testis tissue using EFHB antibody (17352-1-AP) at dilution of 1:200 and CoraLite®488-Conjugated AffiniPure Goat Anti-Rabbit IgG(H+L). This data was developed using the same antibody clone with 17352-1-PBS in a different storage buffer formulation.