

For Research Use Only

MAP2K4 Polyclonal antibody

Catalog Number: 17340-1-AP

Featured Product

19 Publications



Basic Information

Catalog Number:

17340-1-AP

Source:

Rabbit

Isotype:

IgG

Immunogen Catalog Number:

AG11376

GenBank Accession Number:

BC036032

GeneID (NCBI):

6416

UNIPROT ID:

P45985

Full Name:

mitogen-activated protein kinase
kinase 4

Calculated MW:

399 aa, 44 kDa

Observed MW:

44-50 kDa

Purification Method:

Antigen affinity purification

Recommended Dilutions:

WB: 1:500-1:2000

IHC: 1:50-1:500

Applications

Tested Applications:

WB, IHC, ELISA

Cited Applications:

WB, IHC

Species Specificity:

human, mouse

Cited Species:

human, mouse, rat

Note-IHC: suggested antigen retrieval with TE buffer pH 9.0; (*) Alternatively, antigen retrieval may be performed with citrate buffer pH 6.0

Positive Controls:

WB : K-562 cells, HEK-293 cells, HeLa cells, RAW264.7, RAW 264.7 cells

IHC : human liver cancer tissue, human breast cancer tissue, human skeletal muscle tissue

Background Information

MAP2K4 is also named as JNKK1, MEK4, MKK4, PRKMK4, SEK1, SERK1, SKK1 and belongs to the protein kinase superfamily. MAP2K4 is a member of the mitogen-activated protein kinase family, originally identified as a kinase involved in the stress-activated protein kinase pathway by directly phosphorylating c-Jun NH 2-terminal kinase. This protein has 2 isoforms produced by alternative splicing.

Notable Publications

Author	Pubmed ID	Journal	Application
Xuechao Wan	27594411	Int J Biochem Cell Biol	WB
Ze-Qing Pu	33124187	J Cell Mol Med	WB
Yiyi Liu	31594754	EBioMedicine	WB,IHC

Storage

Storage:

Store at -20°C. Stable for one year after shipment.

Storage Buffer:

PBS with 0.02% sodium azide and 50% glycerol, pH7.3

Aliquoting is unnecessary for -20°C storage

For technical support and original validation data for this product please contact:

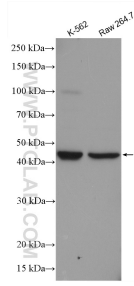
T: 4006900926

E: Proteintech-CN@ptglab.com

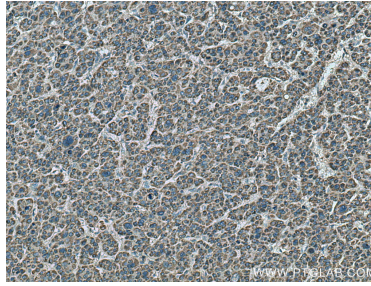
W: ptgcn.com

This product is exclusively available under Proteintech Group brand and is not available to purchase from any other manufacturer.

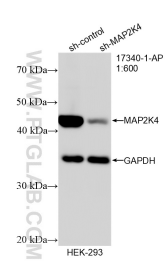
Selected Validation Data



Various lysates were subjected to SDS PAGE followed by western blot with 17340-1-AP (MAP2K4 antibody) at dilution of 1:1000 incubated at room temperature for 1.5 hours.



Immunohistochemical analysis of paraffin-embedded human liver cancer tissue slide using 17340-1-AP (MAP2K4 antibody) at dilution of 1:200 (under 10x lens). Heat mediated antigen retrieval with Tris-EDTA buffer (pH 9.0).



WB result of MAP2K4 antibody (17340-1-AP; 1:600; incubated at room temperature for 1.5 hours) with sh-Control and sh-MAP2K4 transfected HEK-293 cells.