

For Research Use Only

GSG1L Polyclonal antibody

Catalog Number: 17328-1-AP **1 Publications**



Basic Information

Catalog Number: 17328-1-AP	GenBank Accession Number: BC016460	Purification Method: Antigen affinity purification
Size: 450 µg/ml	GeneID (NCBI): 146395	Recommended Dilutions: WB 1:500-1:2000 IHC 1:20-1:200
Source: Rabbit	UNIPROT ID: Q6UXU4	
Isotype: IgG	Full Name: GSG1-like	
Immunogen Catalog Number: AG11307	Calculated MW: 176 aa, 21 kDa	
	Observed MW: 36-43 kDa	

Applications

Tested Applications:

IHC, WB, ELISA

Species Specificity:

human, mouse, rat

Cited Species:

rat

Note-IHC: suggested antigen retrieval with TE buffer pH 9.0; (*) Alternatively, antigen retrieval may be performed with citrate buffer pH 6.0

Positive Controls:

WB: Raji cells, U-251 cells, SGC-7901 cells, mouse brain tissue, mouse liver tissue, rat brain tissue, rat liver tissue

IHC: human tonsillitis tissue,

Background Information

GSG1L is a component of the inner core of AMPAR complex. It modifies AMPA receptor (AMPA) gating. GSG1L is mainly present on B lymphocytes. This antibody can recognize all the 4 isoforms of GSG1L. GSG1L was detected the isoform of 43 kDa in rat brain (PMID: 22813734).

Notable Publications

Author	Pubmed ID	Journal	Application
Amanda M Perozzo	37884493	Nat Commun	

Storage

Storage:

Store at -20°C. Stable for one year after shipment.

Storage Buffer:

PBS with 0.02% sodium azide and 50% glycerol pH 7.3.

Aliquoting is unnecessary for -20°C storage

For technical support and original validation data for this product please contact:

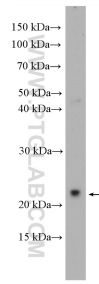
T: 4006900926

E: Proteintech-CN@ptglab.com

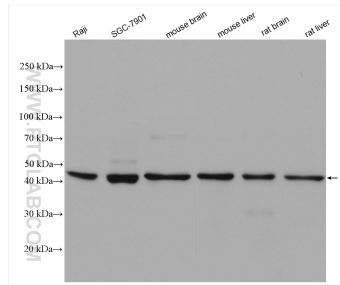
W: ptgcn.com

This product is exclusively available under Proteintech Group brand and is not available to purchase from any other manufacturer.

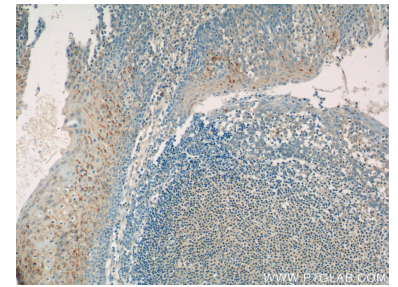
Selected Validation Data



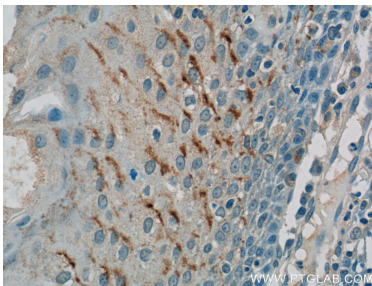
U-251 cells were subjected to SDS PAGE followed by western blot with 17328-1-AP (GSG1L antibody) at dilution of 1:300 incubated at room temperature for 1.5 hours.



Various lysates were subjected to SDS PAGE followed by western blot with 17328-1-AP (GSG1L antibody) at dilution of 1:1000 incubated at room temperature for 1.5 hours.



Immunohistochemical analysis of paraffin-embedded human tonsillitis tissue slide using 17328-1-AP (GSG1L Antibody) at dilution of 1:50 (under 10x lens).



Immunohistochemical analysis of paraffin-embedded human tonsillitis tissue slide using 17328-1-AP (GSG1L Antibody) at dilution of 1:50 (under 40x lens).