

For Research Use Only

PLD3 Polyclonal antibody

Catalog Number: 17327-1-AP

Featured Product

3 Publications



Basic Information

Catalog Number:

17327-1-AP

Concentration:

550 ug/ml

Source:

Rabbit

Isotype:

IgG

Immunogen Catalog Number:

AG11306

GenBank Accession Number:

BC036327

GeneID (NCBI):

23646

UNIPROT ID:

Q8IV08

Full Name:

phospholipase D family, member 3

Calculated MW:

490 aa, 55 kDa

Observed MW:

55 kDa

Purification Method:

Antigen affinity purification

Recommended Dilutions:

WB: 1:1000-1:4000

IHC: 1:250-1:1000

IF-P: 1:50-1:500

IF/ICC: 1:50-1:500

Applications

Tested Applications:

WB, IHC, IF/ICC, IF-P, ELISA

Cited Applications:

WB, IF

Species Specificity:

human, mouse, rat

Cited Species:

human, mouse

Note-IHC: suggested antigen retrieval with TE buffer pH 9.0; (*) Alternatively, antigen retrieval may be performed with citrate buffer pH 6.0

Positive Controls:

WB : HEK-293 cells, HeLa cells, HepG2 cells, SH-SY5Y cells, L02 cells, SK-N-SH cells

IHC : human stomach tissue, mouse brain tissue

IF-P : mouse brain tissue,

IF/ICC : A431 cells,

Background Information

Notable Publications

Author	Pubmed ID	Journal	Application
Amy C Flor	29090099	Cell Death Discov	
Teresa R Kee	35786718	Hum Mol Genet	WB
Shuyan Wen	39973147	ACS Appl Mater Interfaces	WB,IF

Storage

Storage:

Store at -20°C. Stable for one year after shipment.

Storage Buffer:

PBS with 0.02% sodium azide and 50% glycerol, pH7.3

Aliquoting is unnecessary for -20°C storage

For technical support and original validation data for this product please contact:

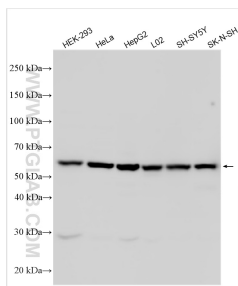
T: 4006900926

E: Proteintech-CN@ptglab.com

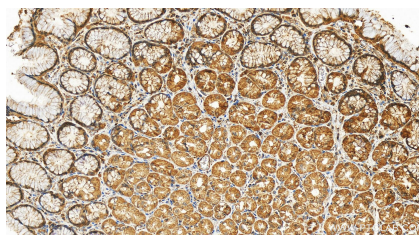
W: ptgcn.com

This product is exclusively available under Proteintech Group brand and is not available to purchase from any other manufacturer.

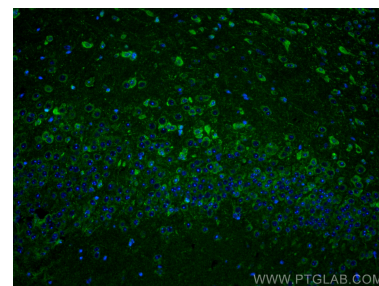
Selected Validation Data



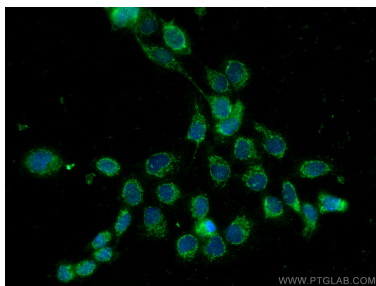
Various lysates were subjected to SDS PAGE followed by western blot with 17327-1-AP (PLD3 antibody) at dilution of 1:2000 incubated at room temperature for 1.5 hours.



Immunohistochemical analysis of paraffin-embedded human normal stomach slide using 17327-1-AP (PLD3 antibody) at dilution of 1:500 (under 20x lens). Heat mediated antigen retrieval with Tris-EDTA buffer (pH 9.0).



Immunofluorescent analysis of (4% PFA) fixed mouse brain tissue using PLD3 antibody (17327-1-AP) at dilution of 1:200 and CoraLite®488-Conjugated AffiniPure Goat Anti-Rabbit IgG(H+L).



Immunofluorescent analysis of (-20°C Methanol) fixed A431 cells using PLD3 antibody (17327-1-AP) at dilution of 1:200 and CoraLite®488-Conjugated AffiniPure Goat Anti-Rabbit IgG(H+L).