

ERMP1 Polyclonal antibody

Catalog Number: 17321-1-AP

1 Publications

Basic Information

Catalog Number:

17321-1-AP

Size:

400 µg/ml

Source:

Rabbit

Isotype:

IgG

Immunogen Catalog Number:

AG11297

GenBank Accession Number:

BC031630

GeneID (NCBI):

79956

UNIPROT ID:

Q7Z2K6

Full Name:

endoplasmic reticulum
metallopeptidase 1

Calculated MW:

317 aa, 36 kDa

Purification Method:

Antigen affinity purification

Recommended Dilutions:

IHC 1:20-1:200

Applications

Tested Applications:

IHC, ELISA

Cited Applications:

IF

Species Specificity:

human

Cited Species:

human

**Note-IHC: suggested antigen retrieval with
TE buffer pH 9.0; (*) Alternatively, antigen
retrieval may be performed with citrate
buffer pH 6.0**

Positive Controls:

IHC : human spleen tissue, human testis tissue

Background Information

Notable Publications

Author	Pubmed ID	Journal	Application
Lumei Chi	31500865	Acta Histochem	IF

Storage

Storage:

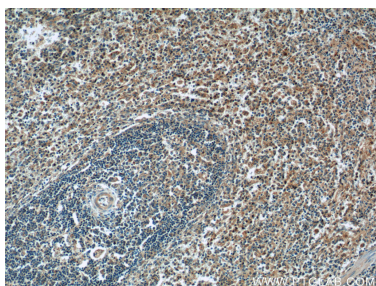
Store at -20°C. Stable for one year after shipment.

Storage Buffer:

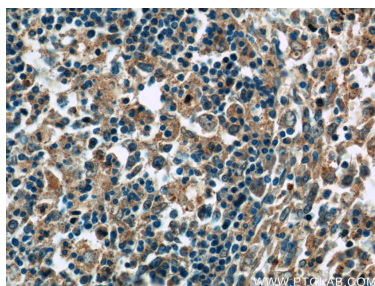
PBS with 0.02% sodium azide and 50% glycerol pH 7.3.

Aliquoting is unnecessary for -20°C storage

Selected Validation Data



Immunohistochemical analysis of paraffin-embedded human spleen tissue slide using 17321-1-AP (ERMP1 Antibody) at dilution of 1:50 (under 10x lens).



Immunohistochemical analysis of paraffin-embedded human spleen tissue slide using 17321-1-AP (ERMP1 Antibody) at dilution of 1:50 (under 40x lens).