

For Research Use Only

EXD1 Polyclonal antibody

Catalog Number: 17313-1-AP

1 Publications



Basic Information

Catalog Number:

17313-1-AP

Size:

600 ug/ml

Source:

Rabbit

Isotype:

IgG

Immunogen Catalog Number:

AG11282

GenBank Accession Number:

BC030628

GeneID (NCBI):

161829

UNIPROT ID:

Q8NHP7

Full Name:

exonuclease 3'-5' domain containing

1

Calculated MW:

514 aa, 58 kDa

Observed MW:

36 kDa, 58 kDa, 75 kDa

Purification Method:

Antigen affinity purification

Recommended Dilutions:

WB 1:200-1:1000

IHC 1:50-1:500

IF/ICC 1:200-1:800

Applications

Tested Applications:

WB, IHC, IF/ICC, ELISA

Cited Applications:

WB, IF

Species Specificity:

human

Cited Species:

mouse

Note-IHC: suggested antigen retrieval with TE buffer pH 9.0; (*) Alternatively, antigen retrieval may be performed with citrate buffer pH 6.0

Positive Controls:

WB : HeLa cells, SH-SY5Y cells

IHC : human testis tissue,

IF/ICC : HeLa cells,

Background Information

EXD1, also named as EXDL1, has three isoforms with MW 58 kDa, 36 kDa and 65 kDa. This antibody can recognize all these three isoforms.

Notable Publications

Author	Pubmed ID	Journal	Application
Opeyemi Olotu	36624638	Andrology	WB,IF

Storage

Storage:

Store at -20°C. Stable for one year after shipment.

Storage Buffer:

PBS with 0.02% sodium azide and 50% glycerol pH 7.3.

Aliquoting is unnecessary for -20°C storage

For technical support and original validation data for this product please contact:

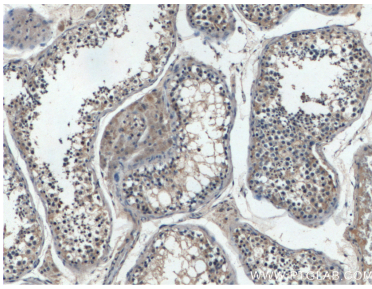
T: 4006900926

E: Proteintech-CN@ptglab.com

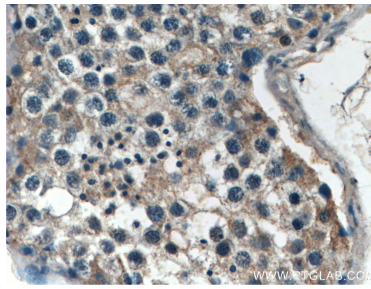
W: ptgcn.com

This product is exclusively available under Proteintech Group brand and is not available to purchase from any other manufacturer.

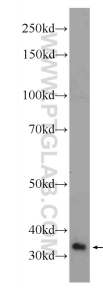
Selected Validation Data



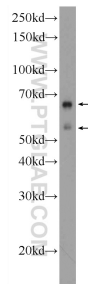
Immunohistochemical analysis of paraffin-embedded human testis tissue slide using 17313-1-AP (EXD1 antibody) at dilution of 1:200 (under 10x lens).



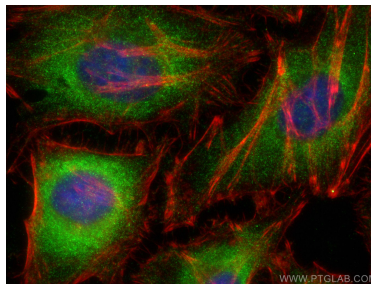
Immunohistochemical analysis of paraffin-embedded human testis tissue slide using 17313-1-AP (EXD1 antibody) at dilution of 1:200 (under 40x lens).



HeLa cells were subjected to SDS PAGE followed by western blot with 17313-1-AP (EXD1 Antibody) at dilution of 1:300 incubated at room temperature for 1.5 hours.



SH-SY5Y cells were subjected to SDS PAGE followed by western blot with 17313-1-AP (EXD1 Antibody) at dilution of 1:600 incubated at room temperature for 1.5 hours.



Immunofluorescent analysis of (-20°C Ethanol) fixed HeLa cells using EXD1 antibody (17313-1-AP) at dilution of 1:400 and CoraLite®488-Conjugated AffiniPure Goat Anti-Rabbit IgG(H+L) (SA00013-2), CL594-phalloidin (red).