

For Research Use Only

# RPS4Y1 Polyclonal antibody, PBS Only

Catalog Number: 17296-1-PBS



## Basic Information

<b>Catalog Number:</b> 17296-1-PBS	<b>GenBank Accession Number:</b> BC010286	<b>Purification Method:</b> Antigen affinity purification
<b>Concentration:</b> 1 mg/ml	<b>GeneID (NCBI):</b> 6192	
<b>Source:</b> Rabbit	<b>UNIPROT ID:</b> P22090	
<b>Isotype:</b> IgG	<b>Full Name:</b> ribosomal protein S4, Y-linked 1	
<b>Immunogen Catalog Number:</b> AG11176	<b>Calculated MW:</b> 263 aa, 29 kDa	
	<b>Observed MW:</b> 29 kDa	

## Applications

**Tested Applications:**  
WB, IHC, IF/ICC, Indirect ELISA

**Species Specificity:**  
human, mouse, rat

## Background Information

RPS4Y1, a Y-linked gene in the human, encodes a subunit of ribosomal protein S4, a component of the 40S subunit and 60S subunit. Ribosomal protein S4 is the only ribosomal protein known to be encoded by more than one gene, namely this gene, RPS4Y2 and the ribosomal protein S4, X-linked (RPS4X). RPS4Y maps to a 90-kb segment that has been implicated in Turner syndrome. As a homolog with RPS4X, the antibody can recognize endogenous level of RPS4Y and RPS4X, at 29-32kDa.

## Storage

**Storage:**  
Store at -80°C.  
**The product is shipped with ice packs. Upon receipt, store it immediately at -80°C**

**Storage Buffer:**  
PBS Only

For technical support and original validation data for this product please contact:

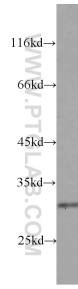
T: 4006900926

E: [Proteintech-CN@ptglab.com](mailto:Proteintech-CN@ptglab.com)

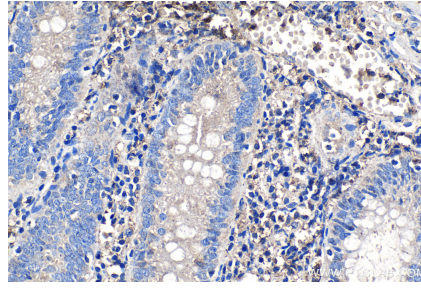
W: [ptgcn.com](http://ptgcn.com)

**This product is exclusively available under Proteintech Group brand and is not available to purchase from any other manufacturer.**

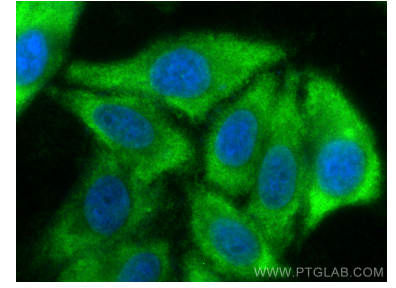
## Selected Validation Data



DU 145 cells were subjected to SDS PAGE followed by western blot with 17296-1-AP (RPS4Y1 antibody) at dilution of 1:1000 incubated at room temperature for 1.5 hours. This data was developed using the same antibody clone with 17296-1-PBS in a different storage buffer formulation.



Immunohistochemical analysis of paraffin-embedded human appendicitis tissue slide using 17296-1-AP (RPS4Y1 antibody) at dilution of 1:200 (under 10x lens). Heat mediated antigen retrieval with Tris-EDTA buffer (pH 9.0). This data was developed using the same antibody clone with 17296-1-PBS in a different storage buffer formulation.



Immunofluorescent analysis of (-20°C Ethanol) fixed HepG2 cells using RPS4Y1 antibody (17296-1-AP) at dilution of 1:400 and CoraLite@488-Conjugated Goat Anti-Rabbit IgG(H+L) (SA00013-2). This data was developed using the same antibody clone with 17296-1-PBS in a different storage buffer formulation.