

For Research Use Only

RPS4Y1 Polyclonal antibody

Catalog Number: 17296-1-AP

1 Publications



Basic Information

Catalog Number:

17296-1-AP

Concentration:

180 ug/ml

Source:

Rabbit

Isotype:

IgG

Immunogen Catalog Number:

AG11176

GenBank Accession Number:

BC010286

GeneID (NCBI):

6192

UNIPROT ID:

P22090

Full Name:

ribosomal protein S4, Y-linked 1

Calculated MW:

263 aa, 29 kDa

Observed MW:

29 kDa

Purification Method:

Antigen affinity purification

Recommended Dilutions:

WB 1:500-1:1000

IHC 1:50-1:500

IF/ICC 1:200-1:800

Applications

Tested Applications:

WB, IHC, IF/ICC, ELISA

Cited Applications:

IF

Species Specificity:

human, mouse, rat

Cited Species:

human

Note-IHC: suggested antigen retrieval with TE buffer pH 9.0; (*) Alternatively, antigen retrieval may be performed with citrate buffer pH 6.0

Positive Controls:

WB : DU 145 cells, A2780 cells, HeLa cells, mouse ovary tissue, mouse testis tissue, SKOV-3 cells

IHC : human appendicitis tissue,

IF/ICC : HepG2 cells,

Background Information

RPS4Y1, a Y-linked gene in the human, encodes a subunit of ribosomal protein S4, a component of the 40S subunit and 60S subunit. Ribosomal protein S4 is the only ribosomal protein known to be encoded by more than one gene, namely this gene, RPS4Y2 and the ribosomal protein S4, X-linked (RPS4X). RPS4Y maps to a 90-kb segment that has been implicated in Turner syndrome. As a homolog with RPS4X, the antibody can recognize endogenous level of RPS4Y and RPS4X, at 29-32kDa.

Notable Publications

Author	Pubmed ID	Journal	Application
Fangbo Liu	38947517	iScience	IF

Storage

Storage:

Store at -20°C. Stable for one year after shipment.

Storage Buffer:

PBS with 0.02% sodium azide and 50% glycerol pH 7.3.

Aliquoting is unnecessary for -20°C storage

For technical support and original validation data for this product please contact:

T: 4006900926

E: Proteintech-CN@ptglab.com

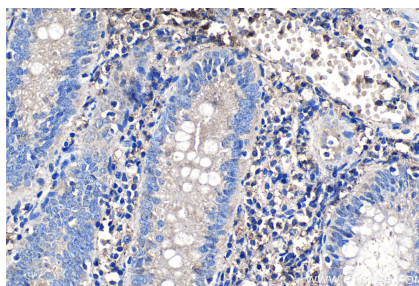
W: ptgcn.com

This product is exclusively available under Proteintech Group brand and is not available to purchase from any other manufacturer.

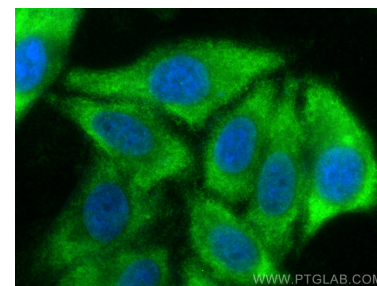
Selected Validation Data



DU 145 cells were subjected to SDS PAGE followed by western blot with 17296-1-AP (RPS4Y1 antibody) at dilution of 1:1000 incubated at room temperature for 1.5 hours.



Immunohistochemical analysis of paraffin-embedded human appendicitis tissue slide using 17296-1-AP (RPS4Y1 antibody) at dilution of 1:200 (under 10x lens). Heat mediated antigen retrieval with Tris-EDTA buffer (pH 9.0).



Immunofluorescent analysis of (-20°C Ethanol) fixed HepG2 cells using RPS4Y1 antibody (17296-1-AP) at dilution of 1:400 and CoraLite®488-Conjugated Goat Anti-Rabbit IgG(H+L) (SA00013-2).