

For Research Use Only

# KIF6 Polyclonal antibody

Catalog Number: 17290-1-AP **2 Publications**



## Basic Information

**Catalog Number:**

17290-1-AP

**Size:**

300 µg/ml

**Source:**

Rabbit

**Isotype:**

IgG

**Immunogen Catalog Number:**

AG11164

**GenBank Accession Number:**

BC022074

**GeneID (NCBI):**

221458

**UNIPROT ID:**

Q6ZMV9

**Full Name:**

kinesin family member 6

**Calculated MW:**

265aa, 30 kDa; 814aa, 93 kDa

**Observed MW:**

93 kDa

**Purification Method:**

Antigen affinity purification

**Recommended Dilutions:**

WB 1:500-1:2000

IP 0.5-4.0 µg for 1.0-3.0 mg of total protein lysate

IHC 1:20-1:200

## Applications

**Tested Applications:**

IHC, IP, WB, ELISA

**Cited Applications:**

WB, IF

**Species Specificity:**

human, mouse, rat

**Cited Species:**

mouse, monkey

**Note-IHC: suggested antigen retrieval with TE buffer pH 9.0; (\*) Alternatively, antigen retrieval may be performed with citrate buffer pH 6.0**

**Positive Controls:**

WB : mouse testis tissue, rat testis tissue

IP : mouse testis tissue,

IHC : human liver tissue,

## Background Information

### Notable Publications

Author	Pubmed ID	Journal	Application
Maki Takagishi	38235522	Dis Model Mech	IF, WB
Maki Takagishi	36824804	bioRxiv	WB, IF

## Storage

**Storage:**

Store at -20°C. Stable for one year after shipment.

**Storage Buffer:**

PBS with 0.02% sodium azide and 50% glycerol pH 7.3.

Aliquoting is unnecessary for -20°C storage

For technical support and original validation data for this product please contact:

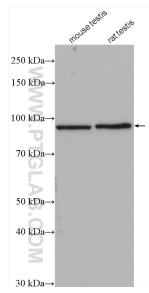
T: 4006900926

E: Proteintech-CN@ptglab.com

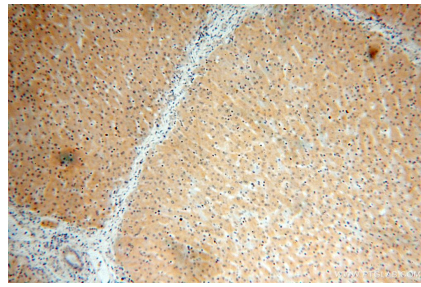
W: ptgcn.com

**This product is exclusively available under Proteintech Group brand and is not available to purchase from any other manufacturer.**

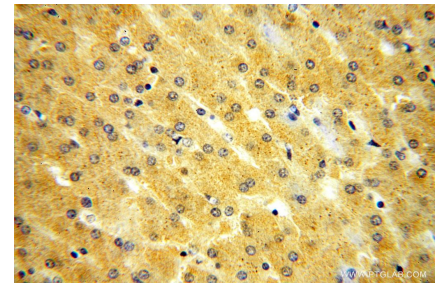
## Selected Validation Data



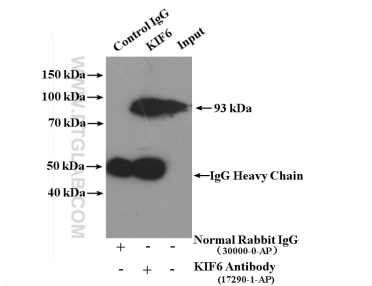
Various lysates were subjected to SDS PAGE followed by western blot with 17290-1-AP (KIF6 antibody) at dilution of 1:1000 incubated at room temperature for 1.5 hours.



Immunohistochemical analysis of paraffin-embedded human liver using 17290-1-AP (KIF6 antibody) at dilution of 1:50 (under 10x lens).



Immunohistochemical analysis of paraffin-embedded human liver using 17290-1-AP (KIF6 antibody) at dilution of 1:50 (under 40x lens).



IP result of anti-KIF6 (IP:17290-1-AP, 4ug; Detection:17290-1-AP 1:500) with mouse testis tissue lysate 4000ug.