

For Research Use Only

# EIF4E3 Polyclonal antibody

Catalog Number: 17282-1-AP

Featured Product

10 Publications



## Basic Information

### Catalog Number:

17282-1-AP

### Concentration:

300 µg/ml

### Source:

Rabbit

### Isotype:

IgG

### Immunogen Catalog Number:

AG11056

### GenBank Accession Number:

BC031289

### GeneID (NCBI):

317649

### UNIPROT ID:

Q8N5X7

### Full Name:

eukaryotic translation initiation factor 4E family member 3

### Calculated MW:

24 kDa

### Observed MW:

24-30 kDa

### Purification Method:

Antigen affinity purification

### Recommended Dilutions:

WB 1:500-1:3000

IF/ICC 1:10-1:100

## Applications

### Tested Applications:

WB, IF/ICC, ELISA

### Cited Applications:

WB, IHC, IF, IP

### Species Specificity:

human, mouse, rat

### Cited Species:

human, mouse

### Positive Controls:

WB : HeLa cells, A549 cells, mouse heart tissue, HepG2 cells

IF/ICC : HeLa cells,

## Background Information

EIF4E3, also known as Eukaryotic translation initiation factor 4E type 3, is a 224 amino acid protein, which recognizes and binds the 7-methylguanosine-containing mRNA cap during an early step in the initiation of protein synthesis. EIF4E3 acts as a tissue-specific tumor suppressor. For instance, eIF4E3 inhibits expression of both mRNA export and translation targets of eIF4E1, consistent with its nuclear and cytoplasmic localization. Importantly, eIF4E3 overexpression represses oncogenic transformation. (PMID: 23587918).

## Notable Publications

Author	Pubmed ID	Journal	Application
Jun Pang	32953883	Biomed Res Int	WB
Nourhan Abdelfattah	30382096	Nat Commun	WB, IF
Irene Riz	27626179	Oncotarget	WB

## Storage

### Storage:

Store at -20°C. Stable for one year after shipment.

### Storage Buffer:

PBS with 0.02% sodium azide and 50% glycerol, pH7.3

Aliquoting is unnecessary for -20°C storage

For technical support and original validation data for this product please contact:

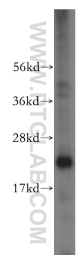
T: 4006900926

E: [Proteintech-CN@ptglab.com](mailto:Proteintech-CN@ptglab.com)

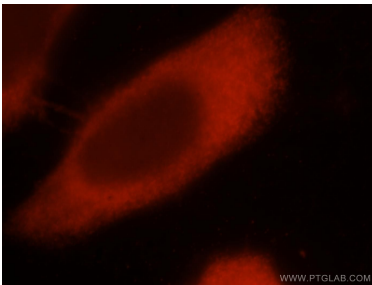
W: [ptgcn.com](http://ptgcn.com)

This product is exclusively available under Proteintech Group brand and is not available to purchase from any other manufacturer.

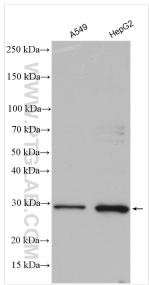
# Selected Validation Data



HeLa cells were subjected to SDS PAGE followed by western blot with 17282-1-AP (EIF4E3 antibody) at dilution of 1:500 incubated at room temperature for 1.5 hours.



Immunofluorescent analysis of HeLa cells, using EIF4E3 antibody 17282-1-AP at 1:25 dilution and Rhodamine-labeled goat anti-rabbit IgG (red).



Various lysates were subjected to SDS PAGE followed by western blot with 17282-1-AP (EIF4E3 antibody) at dilution of 1:500 incubated at room temperature for 1.5 hours.