

For Research Use Only

UBE2L6 Polyclonal antibody

Catalog Number: 17278-1-AP

Featured Product

6 Publications



Basic Information

Catalog Number:

17278-1-AP

Size:

650 µg/ml

Source:

Rabbit

Isotype:

IgG

Immunogen Catalog Number:

AG11045

GenBank Accession Number:

BC032491

GeneID (NCBI):

9246

UNIPROT ID:

O14933

Full Name:

ubiquitin-conjugating enzyme E2L 6

Calculated MW:

153 aa, 18 kDa

Observed MW:

18 kDa

Purification Method:

Antigen affinity purification

Recommended Dilutions:

WB 1:500-1:2000

IP 0.5-4.0 µg for 1.0-3.0 mg of total protein lysate

IF/ICC 1:200-1:800

Applications

Tested Applications:

IF/ICC, IP, WB, ELISA

Cited Applications:

WB, IHC

Species Specificity:

human

Cited Species:

human

Positive Controls:

WB : Jurkat cells,

IP : Jurkat cells,

IF/ICC : HeLa cells,

Background Information

Notable Publications

Author	Pubmed ID	Journal	Application
Jie Jin	34257278	Cell Death Dis	WB
Christopher Noyes	36653474	Commun Biol	WB
Songbiao Zhu	33647481	Genomics Proteomics Bioinformatics	WB

Storage

Storage:

Store at -20°C. Stable for one year after shipment.

Storage Buffer:

PBS with 0.02% sodium azide and 50% glycerol pH 7.3.

Aliquoting is unnecessary for -20°C storage

For technical support and original validation data for this product please contact:

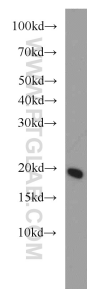
T: 4006900926

E: Proteintech-CN@ptglab.com

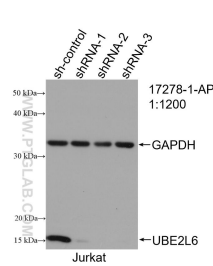
W: ptgcn.com

This product is exclusively available under Proteintech Group brand and is not available to purchase from any other manufacturer.

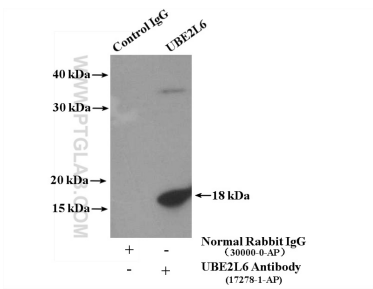
Selected Validation Data



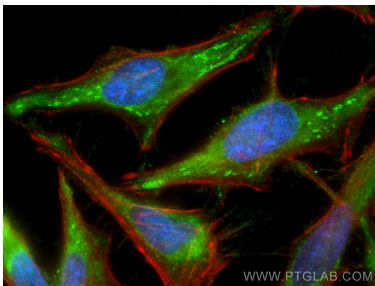
Jurkat cells were subjected to SDS PAGE followed by western blot with 17278-1-AP (UBE2L6 antibody) at dilution of 1:1000 incubated at room temperature for 1.5 hours.



WB result of UBE2L6 antibody (17278-1-AP; 1:1200; incubated at room temperature for 1.5 hours) with sh-Control and sh-UBE2L6 transfected Jurkat cells.



IP result of anti-UBE2L6 (IP:17278-1-AP, 4ug; Detection:17278-1-AP 1:1000) with Jurkat cells lysate 2000ug.



Immunofluorescent analysis of (-20°C Ethanol) fixed HeLa cells using UBE2L6 antibody (17278-1-AP) at dilution of 1:400 and CoraLite®488-Conjugated AffiniPure Goat Anti-Rabbit IgG(H+L), CL594-Phalloidin (red).