

For Research Use Only

SNAPC5 Polyclonal antibody

Catalog Number: 17272-1-AP

1 Publications



Basic Information

Catalog Number:

17272-1-AP

Size:

1000 µg/ml

Source:

Rabbit

Isotype:

IgG

Immunogen Catalog Number:

AG11029

GenBank Accession Number:

BC014315

GeneID (NCBI):

10302

UNIPROT ID:

O75971

Full Name:

small nuclear RNA activating complex, polypeptide 5, 19kDa

Calculated MW:

68aa, 8 kDa; 98aa, 11 kDa

Observed MW:

19 kDa

Purification Method:

Antigen affinity purification

Recommended Dilutions:

WB 1:500-1:1000

IHC 1:20-1:200

IF/ICC 1:20-1:200

Applications

Tested Applications:

WB, IHC, IF/ICC, ELISA

Cited Applications:

WB, IHC, IF

Species Specificity:

human

Cited Species:

human

Note-IHC: suggested antigen retrieval with TE buffer pH 9.0; (*) Alternatively, antigen retrieval may be performed with citrate buffer pH 6.0

Positive Controls:

WB: HeLa cells,

IHC: human testis tissue, human breast cancer tissue, human kidney tissue

IF/ICC: HeLa cells,

Background Information

SNAPC5, also named as SNAP19, is snRNA-activating protein complex 19 kDa. It's a part of the SNAPc complex required for the transcription of both RNA polymerase II and III small-nuclear RNA genes.

Notable Publications

Author	Pubmed ID	Journal	Application
Guoyang Zhang	37441804	Aging (Albany NY)	WB, IHC, IF

Storage

Storage:

Store at -20°C. Stable for one year after shipment.

Storage Buffer:

PBS with 0.02% sodium azide and 50% glycerol pH 7.3.

Aliquoting is unnecessary for -20°C storage

For technical support and original validation data for this product please contact:

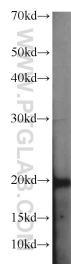
T: 4006900926

E: Proteintech-CN@ptglab.com

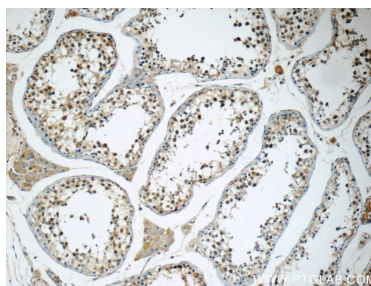
W: ptgcn.com

This product is exclusively available under Proteintech Group brand and is not available to purchase from any other manufacturer.

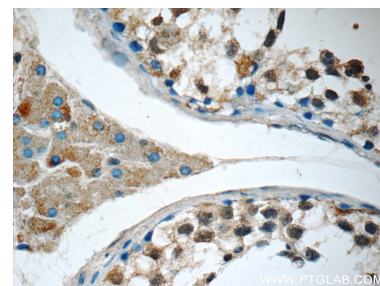
Selected Validation Data



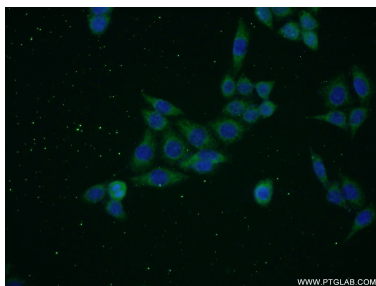
HeLa cells were subjected to SDS PAGE followed by western blot with 17272-1-AP (SNAPC5 antibody) at dilution of 1:500 incubated at room temperature for 1.5 hours.



Immunohistochemical analysis of paraffin-embedded human testis tissue slide using 17272-1-AP (SNAPC5 Antibody) at dilution of 1:50.



Immunohistochemical analysis of paraffin-embedded human testis tissue slide using 17272-1-AP (SNAPC5 Antibody) at dilution of 1:50.



Immunofluorescent analysis of HeLa cells using 17272-1-AP (SNAPC5 antibody) at dilution of 1:50 and Alexa Fluor 488-conjugated AffiniPure Goat Anti-Rabbit IgG(H+L).