

For Research Use Only

# GPD1L Polyclonal antibody

Catalog Number: 17263-1-AP

Featured Product

7 Publications



## Basic Information

Catalog Number:

17263-1-AP

Concentration:

500 ug/ml

Source:

Rabbit

Isotype:

IgG

Immunogen Catalog Number:

AG10977

GenBank Accession Number:

BC028726

GeneID (NCBI):

23171

UNIPROT ID:

Q8N335

Full Name:

glycerol-3-phosphate dehydrogenase 1-like

Calculated MW:

351 aa, 38 kDa

Observed MW:

38-40 kDa

Purification Method:

Antigen affinity purification

Recommended Dilutions:

WB 1:500-1:2000

## Applications

Tested Applications:

WB, ELISA

Cited Applications:

WB

Species Specificity:

human, mouse, rat

Cited Species:

human, mouse, rat

Positive Controls:

WB : mouse heart tissue, human skeletal muscle tissue, human brain tissue, HEK-293 cells

## Background Information

Glycerol-3-phosphate dehydrogenase 1-like (GPD1L) is encoded by the gene GPD1L, which is located on chromosome 3p22.3. GPD1L is responsible for catalyzing the conversion of sn-glycerol 3-phosphate to glycerone phosphate. GPD1L displayed a dysregulated state in a wide variety of cancers.

## Notable Publications

Author	Pubmed ID	Journal	Application
Ye Du	32908121	Cell Death Dis	WB
Hongting Hao	36064558	J Transl Med	WB
Shiqi Wu	35749365	Proc Natl Acad Sci U S A	WB

## Storage

Storage:

Store at -20°C. Stable for one year after shipment.

Storage Buffer:

PBS with 0.02% sodium azide and 50% glycerol pH 7.3.

Aliquoting is unnecessary for -20°C storage

For technical support and original validation data for this product please contact:

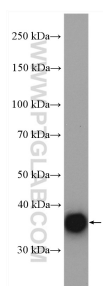
T: 4006900926

E: [Proteintech-CN@ptglab.com](mailto:Proteintech-CN@ptglab.com)

W: [ptgcn.com](http://ptgcn.com)

This product is exclusively available under Proteintech Group brand and is not available to purchase from any other manufacturer.

## Selected Validation Data



mouse heart tissue were subjected to SDS PAGE followed by western blot with 17263-1-AP (GPD1L antibody) at dilution of 1:1000 incubated at room temperature for 1.5 hours.