

# NDEL1 Polyclonal antibody

Catalog Number: 17262-1-AP

5 Publications

## Basic Information

## Catalog Number:

17262-1-AP

## Size:

900 µg/ml

## Source:

Rabbit

## Isotype:

IgG

## Immunogen Catalog Number:

AG10975

## GenBank Accession Number:

BC026101

## GeneID (NCBI):

81565

## UNIPROT ID:

Q9GZM8

## Full Name:

nudE nuclear distribution gene E  
homolog (A. nidulans)-like 1

## Calculated MW:

345 aa, 38 kDa, 41 kDa

## Observed MW:

38-42 kDa

## Purification Method:

Antigen affinity purification

## Recommended Dilutions:

WB 1:500-1:2000

IP 0.5-4.0 µg for 1.0-3.0 mg of total  
protein lysate

## Applications

## Tested Applications:

IP, WB, ELISA

## Cited Applications:

WB, IP, IF

## Species Specificity:

human, mouse, rat

## Cited Species:

human, mouse

## Positive Controls:

WB : human brain tissue, HepG2 cells

IP : HepG2 cells,

## Background Information

Nuclear distribution factor E-homolog 1 (NDE1), NDE-like 1 (NDEL1), and Lissencephaly 1 (LIS1) together involve in essential neurodevelopmental processes, including neuronal precursor proliferation and differentiation, neurite outgrowth, and neuronal migration. All three bind directly to Disrupted in Schizophrenia 1 (DISC1), a scaffold protein critical to neuronal proliferation, integration, migration, and synaptic function within the developing and adult brain.[PMID: 18469341] Nuclear distribution element-like 1 (NDEL1) was firstly identified as a regulator of the cytoskeleton in microtubule and intermediate filament dynamics and microtubule-based transport [PMID:21948775]. It is required for organization of the cellular microtubule array and microtubule anchoring at the centrosome, which is in part by targeting the microtubule severing protein KATNA1 to the centrosome[PMID:15728732].

## Notable Publications

Author	Pubmed ID	Journal	Application
Youngsik Woo	31815665	Elife	IP, WB
Ji-Ho Hong	27546710	Sci Rep	WB, IF
Hyowon Hong	31004438	Ann Neurol	WB

## Storage

## Storage:

Store at -20°C. Stable for one year after shipment.

## Storage Buffer:

PBS with 0.02% sodium azide and 50% glycerol pH 7.3.

Aliquoting is unnecessary for -20°C storage

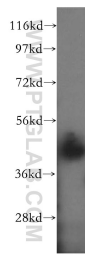
For technical support and original validation data for this product please contact:

T: 4006900926

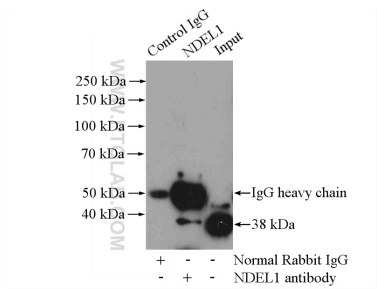
E: [Proteintech-CN@ptglab.com](mailto:Proteintech-CN@ptglab.com)W: [ptgcn.com](http://ptgcn.com)

This product is exclusively available under Proteintech Group brand and is not available to purchase from any other manufacturer.

## Selected Validation Data



human brain tissue were subjected to SDS PAGE followed by western blot with 17262-1-AP (NDEL1 antibody) at dilution of 1:500 incubated at room temperature for 1.5 hours.



IP result of anti-NDEL1 (IP:17262-1-AP, 4ug; Detection:17262-1-AP 1:300) with HepG2 cells lysate 2400ug.