

For Research Use Only

# HLA class I (HLA-B) Polyclonal antibody



Catalog Number: 17260-1-AP

6 Publications

## Basic Information

**Catalog Number:**

17260-1-AP

**Size:**

450 µg/ml

**Source:**

Rabbit

**Isotype:**

IgG

**Immunogen Catalog Number:**

AG10947

**GenBank Accession Number:**

BC013187

**GeneID (NCBI):**

3106

**UNIPROT ID:**

P01889

**Full Name:**

major histocompatibility complex, class I, B

**Calculated MW:**

362 aa, 40 kDa

**Observed MW:**

40-45 kDa

**Purification Method:**

Antigen affinity purification

**Recommended Dilutions:**

WB 1:1000-1:4000

IP 0.5-4.0 µg for 1.0-3.0 mg of total protein lysate

IHC 1:50-1:500

IF 1:50-1:500

## Applications

**Tested Applications:**

IF/ICC, IHC, IP, WB, ELISA

**Cited Applications:**

IF, IHC, WB

**Species Specificity:**

human

**Cited Species:**

human

**Note-IHC: suggested antigen retrieval with TE buffer pH 9.0; (\*) Alternatively, antigen retrieval may be performed with citrate buffer pH 6.0**

**Positive Controls:**

**WB:** A549 cells, HepG2 cells, Jurkat cells, MCF-7 cells, HeLa cells

**IP:** HepG2 cells,

**IHC:** human spleen tissue, human heart tissue, human kidney tissue, human lung tissue, human ovary tissue, human stomach cancer tissue, human tonsillitis tissue

**IF:** HepG2 cells,

## Background Information

Human major histocompatibility complex (MHC) antigens, also referred to as human leukocyte antigens (HLA), are encoded by genes located on the short arm of chromosome 6 (6p21.3). There are two classes of HLA antigens: class I (HLA-A, B and C) and class II (HLA-D). This class I molecules are polymorphic membrane glycoproteins composed of a heavy (alpha) chain (44 kDa) which is encoded by a HLA class I gene (HLA-A, B or C), and  $\beta$  2-microglobulin light (beta) chain (12 kDa). They are involved in the presentation of foreign antigens to the immune system. This polyclonal antibody raised against human HLA-B can also react with HLA-A and HLA-C. (PMID: 667938; 3375250)

## Notable Publications

Author	Pubmed ID	Journal	Application
Chao Zhang	35361683	Gut	IHC
Lisa L Kirkemo	35257663	Elife	IF
Ting Li	34238922	Cell Death Dis	WB

## Storage

**Storage:**

Store at -20°C. Stable for one year after shipment.

**Storage Buffer:**

PBS with 0.02% sodium azide and 50% glycerol pH 7.3.

Aliquoting is unnecessary for -20°C storage

For technical support and original validation data for this product please contact:

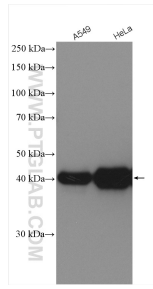
T: 4006900926

E: Proteintech-CN@ptglab.com

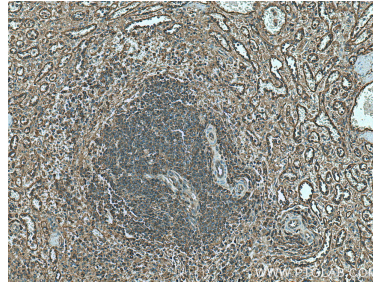
W: ptgcn.com

**This product is exclusively available under Proteintech Group brand and is not available to purchase from any other manufacturer.**

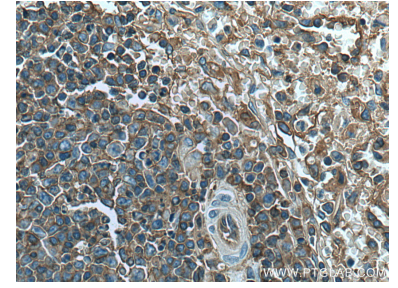
## Selected Validation Data



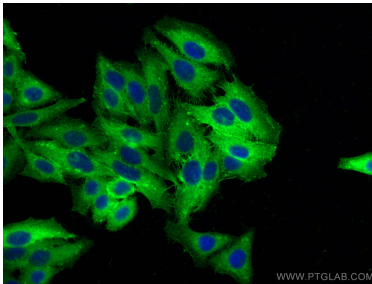
Various lysates were subjected to SDS PAGE followed by western blot with 17260-1-AP (HLA class I (HLA-B) antibody) at dilution of 1:2000 incubated at room temperature for 1.5 hours.



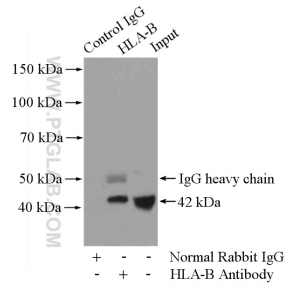
Immunohistochemical analysis of paraffin-embedded human spleen tissue slide using 17260-1-AP (HLA class I (HLA-B) antibody) at dilution of 1:200 (under 10x lens). Heat mediated antigen retrieval with Tris-EDTA buffer (pH 9.0).



Immunohistochemical analysis of paraffin-embedded human spleen tissue slide using 17260-1-AP (HLA class I (HLA-B) antibody) at dilution of 1:200 (under 40x lens). Heat mediated antigen retrieval with Tris-EDTA buffer (pH 9.0).



Immunofluorescent analysis of (-20°C Ethanol) fixed HepG2 cells using HLA class I (HLA-B) antibody (17260-1-AP) at dilution of 1:200 and CoraLite®488-Conjugated AffiniPure Goat Anti-Rabbit IgG(H+L).



IP result of anti-HLA class I (HLA-B) (IP:17260-1-AP, 4ug; Detection:17260-1-AP 1:2000) with HepG2 cells lysate 4000ug.