

For Research Use Only

NDUFA3 Polyclonal antibody

Catalog Number: 17257-1-AP

5 Publications



Basic Information

Catalog Number:

17257-1-AP

Size:

600 µg/ml

Source:

Rabbit

Isotype:

IgG

Immunogen Catalog Number:

AG10912

GenBank Accession Number:

BC011021

GeneID (NCBI):

4696

UNIPROT ID:

O95167

Full Name:

NADH dehydrogenase (ubiquinone) 1

alpha subcomplex, 3, 9kDa

Calculated MW:

65aa, 7 kDa; 84aa, 9 kDa

Observed MW:

9 kDa

Purification Method:

Antigen affinity purification

Recommended Dilutions:

WB 1:500-1:1000

IHC 1:50-1:500

Applications

Tested Applications:

WB, IHC, ELISA

Cited Applications:

WB

Species Specificity:

human

Cited Species:

human

Positive Controls:

WB : human brain tissue, HeLa cells

IHC : human liver tissue,

Note-IHC: suggested antigen retrieval with TE buffer pH 9.0; (*) Alternatively, antigen retrieval may be performed with citrate buffer pH 6.0

Background Information

Notable Publications

Author	Pubmed ID	Journal	Application
Yanchun Ji	32723871	J Biol Chem	WB
Juanjuan Zhang	34311469	Invest Ophthalmol Vis Sci	WB
Guoqiang Han	39357516	Cell Stem Cell	WB

Storage

Storage:

Store at -20°C. Stable for one year after shipment.

Storage Buffer:

PBS with 0.02% sodium azide and 50% glycerol pH 7.3.

Aliquoting is unnecessary for -20°C storage

For technical support and original validation data for this product please contact:

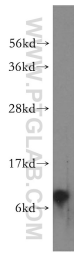
T: 4006900926

E: Proteintech-CN@ptglab.com

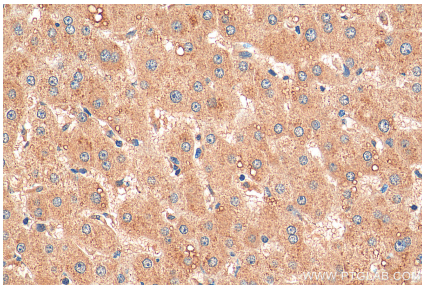
W: ptgcn.com

This product is exclusively available under Proteintech Group brand and is not available to purchase from any other manufacturer.

Selected Validation Data



human brain tissue were subjected to SDS PAGE followed by western blot with 17257-1-AP (NDUFA3 antibody) at dilution of 1:500 incubated at room temperature for 1.5 hours.



Immunohistochemical analysis of paraffin-embedded human liver tissue slide using 17257-1-AP (NDUFA3 antibody) at dilution of 1:200 (under 40x lens). Heat mediated antigen retrieval with Sodium Citrate buffer (pH 6.0).