

For Research Use Only

# SQRDL Polyclonal antibody, PBS Only

Catalog Number: 17256-1-PBS

Featured Product



## Basic Information

Catalog Number:

17256-1-PBS

Source:

Rabbit

Isotype:

IgG

Immunogen Catalog Number:

AG10762

GenBank Accession Number:

BC016836

GeneID (NCBI):

58472

UNIPROT ID:

Q9Y6N5

Full Name:

sulfide quinone reductase-like (yeast)

Calculated MW:

450 aa, 50 kDa

Observed MW:

50 kDa

Purification Method:

Antigen affinity purification

## Applications

Tested Applications:

WB, IHC, IP, Indirect ELISA

Species Specificity:

human, mouse, rat

## Background Information

SQRDL (Sulfide:quinone oxidoreductase, mitochondrial) catalyzes the oxidation of hydrogen sulfide, with the help of a quinone. Although the SQRDL precursor protein displays a molecular weight of 50 kDa, a prominent band at about 46 kDa is detected by western blot. This discrepancy reflects the cleavage of an N-terminal targeting sequence of 4 kDa during the import of the protein into the mitochondria (PMID:22067608). SQRDL is one of the enzymes involved in H<sub>2</sub>S signaling in a discrete population of neurons, oligodendrocytes, and endothelial cells.

## Storage

Storage:

Store at -80°C.

The product is shipped with ice packs. Upon receipt, store it immediately at -80°C

Storage Buffer:

PBS only, pH7.3

For technical support and original validation data for this product please contact:

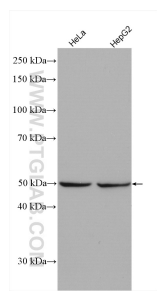
T: 4006900926

E: [Proteintech-CN@ptglab.com](mailto:Proteintech-CN@ptglab.com)

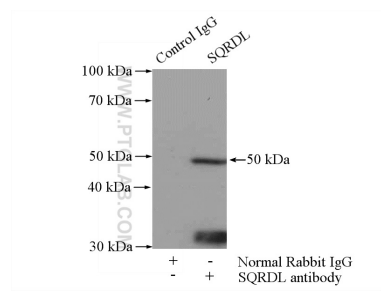
W: [ptgcn.com](http://ptgcn.com)

This product is exclusively available under Proteintech Group brand and is not available to purchase from any other manufacturer.

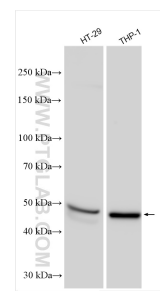
Selected Validation Data



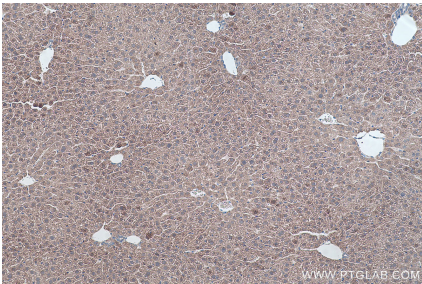
Various lysates were subjected to SDS PAGE followed by western blot with 17256-1-AP (SQRDL antibody) at dilution of 1:2000 incubated at room temperature for 1.5 hours. This data was developed using the same antibody clone with 17256-1-PBS in a different storage buffer formulation.



IP result of anti-SQRDL (IP:17256-1-AP, 4ug; Detection:17256-1-AP 1:500) with HeLa cells lysate 2000ug. This data was developed using the same antibody clone with 17256-1-PBS in a different storage buffer formulation.



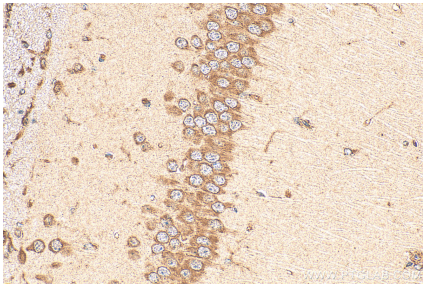
Various lysates were subjected to SDS PAGE followed by western blot with 17256-1-AP (SQRDL antibody) at dilution of 1:4000 incubated at room temperature for 1.5 hours. This data was developed using the same antibody clone with 17256-1-PBS in a different storage buffer formulation.



Immunohistochemical analysis of paraffin-embedded mouse liver tissue slide using 17256-1-AP (SQRDL antibody) at dilution of 1:2000 (under 10x lens). Heat mediated antigen retrieval with Tris-EDTA buffer (pH 9.0). This data was developed using the same antibody clone with 17256-1-PBS in a different storage buffer formulation.



Immunohistochemical analysis of paraffin-embedded rat liver tissue slide using 17256-1-AP (SQRDL antibody) at dilution of 1:2000 (under 10x lens). Heat mediated antigen retrieval with Tris-EDTA buffer (pH 9.0). This data was developed using the same antibody clone with 17256-1-PBS in a different storage buffer formulation.



Immunohistochemical analysis of paraffin-embedded mouse brain tissue slide using 17256-1-AP (SQRDL antibody) at dilution of 1:200 (under 40x lens). Heat mediated antigen retrieval with Tris-EDTA buffer (pH 9.0). This data was developed using the same antibody clone with 17256-1-PBS in a different storage buffer formulation.