

For Research Use Only

TBC1D15 Polyclonal antibody

Catalog Number: 17252-1-AP



Basic Information

Catalog Number: 17252-1-AP	GenBank Accession Number: BC028352	Purification Method: Antigen affinity purification
Size: 300 µg/ml	GeneID (NCBI): 64786	Recommended Dilutions: WB 1:500-1:1000 IF 1:200-1:800
Source: Rabbit	UNIPROT ID: Q8TC07	
Isotype: IgG	Full Name: TBC1 domain family, member 15	
Immunogen Catalog Number: AG10625	Calculated MW: 691 aa, 79 kDa	
	Observed MW: 79 kDa	

Applications

Tested Applications:
IF/ICC, WB, ELISA

Species Specificity:
human, mouse, rat

Positive Controls:

WB: HeLa cells, HepG2 cells, HEK-293T cells, A431 cells, mouse liver tissue, rat liver tissue

IF: HeLa cells,

Background Information

TBC1D15 is a highly conserved protein belonging to the TBC domain family and has similar functions to Rab-GAP. TBC1D15 is ubiquitously expressed and localized predominantly to the cytosol. TBC1D15 is a protein that contains a conserved Tre2/Bub2/Cdc16 (TBC) domain. TBC1D15 can serve as a mitochondrial Rab GTPase-activating protein (Rab-GAP) and influence autophagosome biogenesis and morphology downstream of Parkin activation. TBC1D15 can also control stem cell self-renewal when coupled with the Numb-p53 complex.

Storage

Storage:
Store at -20°C. Stable for one year after shipment.

Storage Buffer:
PBS with 0.02% sodium azide and 50% glycerol pH 7.3.

Aliquoting is unnecessary for -20°C storage

For technical support and original validation data for this product please contact:

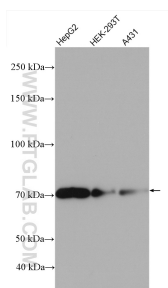
T: 4006900926

E: Proteintech-CN@ptglab.com

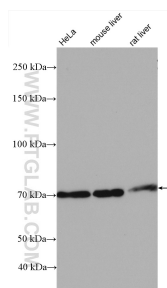
W: ptgcn.com

This product is exclusively available under Proteintech Group brand and is not available to purchase from any other manufacturer.

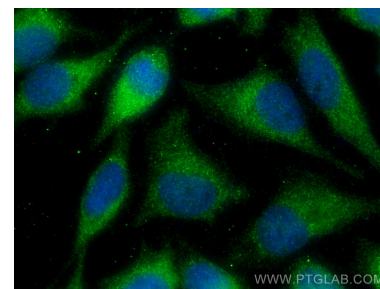
Selected Validation Data



Various lysates were subjected to SDS PAGE followed by western blot with 17252-1-AP (TBC1D15 antibody) at dilution of 1:600 incubated at room temperature for 1.5 hours.



Various lysates were subjected to SDS PAGE followed by western blot with 17252-1-AP (TBC1D15 antibody) at dilution of 1:600 incubated at room temperature for 1.5 hours.



Immunofluorescent analysis of (-20°C Methanol) fixed HeLa cells using TBC1D15 antibody (17252-1-AP) at dilution of 1:400 and CoraLite® 488-Conjugated AffiniPure Goat Anti-Rabbit IgG(H+L), CL594-Phalloidin (red).