

SEC16B Polyclonal antibody

Catalog Number: 17245-1-AP

Basic Information

| | | |
|---|--|--|
| Catalog Number: 17245-1-AP | GenBank Accession Number: BC009106 | Purification Method: Antigen affinity purification |
| Size: 400 µg/ml | GeneID (NCBI): 89866 | Recommended Dilutions: WB 1:500-1:1000 IHC 1:50-1:500 |
| Source: Rabbit | UNIPROT ID: Q96JE7 | |
| Isotype: IgG | Full Name: SEC16 homolog B (S. cerevisiae) | |
| Immunogen Catalog Number: AG11173 | Calculated MW: 71 kDa, 117 kDa Observed MW: 60-70 kDa | |

Applications

| | |
|--|---|
| Tested Applications: IHC, WB, ELISA | Positive Controls: WB : mouse pancreas tissue, IHC : human pancreas cancer tissue, |
| Species Specificity: human, mouse | |
| Note-IHC: suggested antigen retrieval with TE buffer pH 9.0; (*) Alternatively, antigen retrieval may be performed with citrate buffer pH 6.0 | |

Background Information

SEC16B also known as LZTR2, RGPR-p117, is a mammalian homolog of S. cerevisiae Sec16 that is required for organization of transitional endoplasmic reticulum (ER) sites and protein export (PMID: 17192411). SEC16B regulates the transport of peroxisomal biogenesis factors PEX3 and PEX16 from the ER to peroxisomes (PMID:21768384). SEC16B may be involved in human obesity to possess an association between single nucleotide polymorphisms and different measures of obesity (PMID: 28413634).

Storage

Storage:
Store at -20°C. Stable for one year after shipment.
Storage Buffer:
PBS with 0.02% sodium azide and 50% glycerol pH 7.3.
Aliquoting is unnecessary for -20°C storage

For technical support and original validation data for this product please contact:

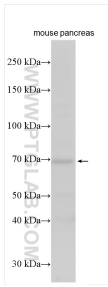
T: 4006900926

E: Proteintech-CN@ptglab.com

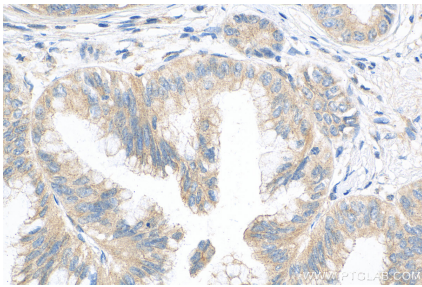
W: ptgcn.com

This product is exclusively available under Proteintech Group brand and is not available to purchase from any other manufacturer.

Selected Validation Data



mouse pancreas tissue was subjected to SDS PAGE followed by western blot with 17245-1-AP (SEC16B antibody) at dilution of 1:600 incubated at room temperature for 1.5 hours.



Immunohistochemical analysis of paraffin-embedded human pancreas cancer tissue slide using 17245-1-AP (SEC16B antibody) at dilution of 1:200 (under 10x lens). Heat mediated antigen retrieval with Tris-EDTA buffer (pH 9.0).