

For Research Use Only

TLR7 Polyclonal antibody

Catalog Number: 17232-1-AP

Featured Product

15 Publications



Basic Information

Catalog Number:

17232-1-AP

Concentration:

550 µg/ml

Source:

Rabbit

Isotype:

IgG

Immunogen Catalog Number:

AG11073

GenBank Accession Number:

BC033651

GeneID (NCBI):

51284

UNIPROT ID:

Q9NYK1

Full Name:

toll-like receptor 7

Calculated MW:

1049 aa, 121 kDa

Observed MW:

121 kDa, 100 kDa

Purification Method:

Antigen affinity purification

Recommended Dilutions:

WB: 1:500-1:1000

IHC: 1:50-1:500

IF/ICC: 1:200-1:800

Applications

Tested Applications:

WB, IHC, IF/ICC, ELISA

Cited Applications:

WB, IHC, IF

Species Specificity:

human, mouse

Cited Species:

human, mouse, rat

Note-IHC: suggested antigen retrieval with TE buffer pH 9.0; (*) Alternatively, antigen retrieval may be performed with citrate buffer pH 6.0

Positive Controls:

WB: mouse lung tissue, Jurkat cells

IHC: human lung tissue, human small intestine tissue

IF/ICC: RAW 264.7 cells,

Background Information

Among the TLR family, TLR7 (toll-like receptor 7) is an endosomal innate immune sensor that can detect single-stranded ribonucleic acid. Constitutive expression of TLR7 is pre-dominant in dendritic cells and B cells compared to other immune cells. Low levels of TLR7 expression have been observed in non-immune cells, such as hepatocytes, epithelial cells, and keratinocytes (PMID: 37596656).

Notable Publications

Author	Pubmed ID	Journal	Application
Li Zhang	32920982	Acta Physiol (Oxf)	WB
Mingyang Niu	33365075	Exp Ther Med	WB
Hsin-Yuan Chen	36421424	Antioxidants (Basel)	WB

Storage

Storage:

Store at -20°C. Stable for one year after shipment.

Storage Buffer:

PBS with 0.02% sodium azide and 50% glycerol, pH7.3

Aliquoting is unnecessary for -20°C storage

For technical support and original validation data for this product please contact:

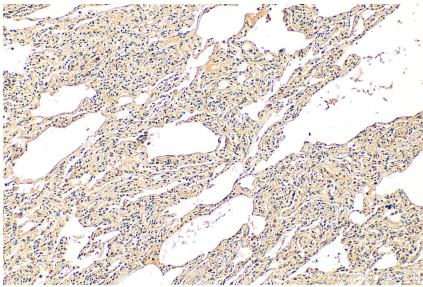
T: 4006900926

E: Proteintech-CN@ptglab.com

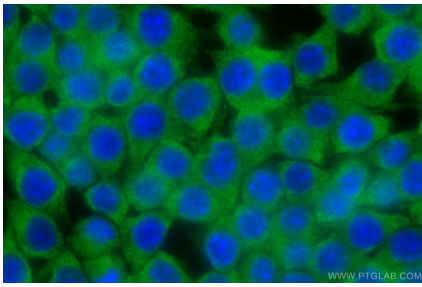
W: ptgcn.com

This product is exclusively available under Proteintech Group brand and is not available to purchase from any other manufacturer.

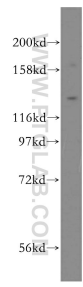
Selected Validation Data



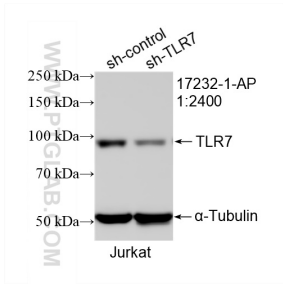
Immunohistochemical analysis of paraffin-embedded human lung tissue slide using 17232-1-AP (TLR7 antibody) at dilution of 1:200 (under 10x lens). Heat mediated antigen retrieval with Tris-EDTA buffer (pH 9.0).



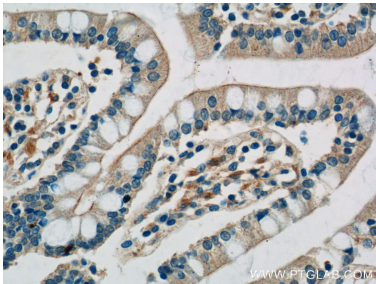
Immunofluorescent analysis of (4% PFA) fixed RAW 264.7 cells using TLR7 antibody (17232-1-AP) at dilution of 1:400 and CoraLite® 488-Conjugated Goat Anti-Rabbit IgG(H+L).



mouse lung tissue were subjected to SDS PAGE followed by western blot with 17232-1-AP (TLR7 antibody) at dilution of 1:400 incubated at room temperature for 1.5 hours.



WB result of TLR7 antibody (17232-1-AP; 1:2400; incubated at room temperature for 1.5 hours) with sh-Control and sh-TLR7 transfected Jurkat cells.



Immunohistochemical analysis of paraffin-embedded human small intestine tissue slide using 17232-1-AP (TLR7 Antibody) at dilution of 1:50 (under 40x lens).