

For Research Use Only

HLA-DRA Polyclonal antibody

Catalog Number: 17221-1-AP

9 Publications



Basic Information

Catalog Number:

17221-1-AP

Concentration:

500 ug/ml

Source:

Rabbit

Isotype:

IgG

Immunogen Catalog Number:

AG11044

GenBank Accession Number:

BC032350

GeneID (NCBI):

3122

ENSEMBL Gene ID:

ENSG00000204287

UNIPROT ID:

P01903

Full Name:

major histocompatibility complex, class II, DR alpha

Calculated MW:

254 aa, 29 kDa

Observed MW:

32-34 kDa

Purification Method:

Antigen affinity purification

Recommended Dilutions:

WB 1:2000-1:10000

IP 0.5-4.0 ug for 1.0-3.0 mg of total protein lysate

IHC 1:500-1:2000

IF/ICC 1:200-1:800

Applications

Tested Applications:

WB, IHC, IF/ICC, IP, ELISA

Cited Applications:

WB, IHC, IF

Species Specificity:

human, rat

Cited Species:

human, rat

Note-IHC: suggested antigen retrieval with TE buffer pH 9.0; (*) Alternatively, antigen retrieval may be performed with citrate buffer pH 6.0

Positive Controls:

WB : Daudi cells, rat spleen tissue, Raji cells, Ramos cells

IP : Raji cells,

IHC : human appendicitis tissue, human tonsillitis tissue

IF/ICC : Raji cells,

Background Information

Notable Publications

Author	Pubmed ID	Journal	Application
Zhi-Gang Wang	34499402	Aging Cell	IF
Pin-Yuan Chen	31649684	Front Immunol	IF
Zhaohui Chen	33033240	Nat Commun	IF

Storage

Storage:

Store at -20°C. Stable for one year after shipment.

Storage Buffer:

PBS with 0.02% sodium azide and 50% glycerol pH 7.3.

Aliquoting is unnecessary for -20°C storage

For technical support and original validation data for this product please contact:

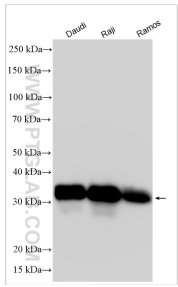
T: 4006900926

E: Proteintech-CN@ptglab.com

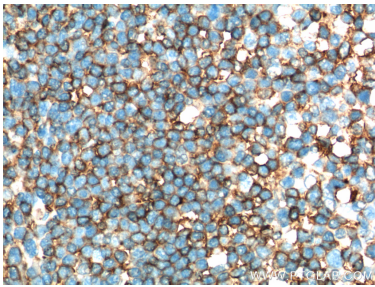
W: ptgcn.com

This product is exclusively available under Proteintech Group brand and is not available to purchase from any other manufacturer.

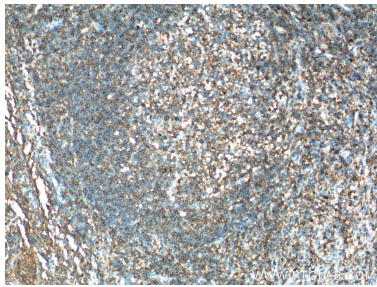
Selected Validation Data



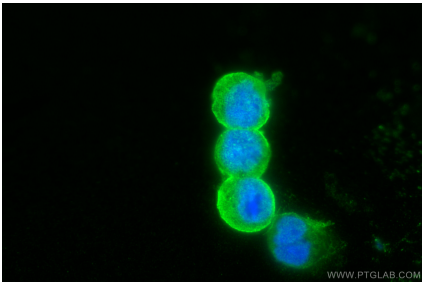
Various lysates were subjected to SDS PAGE followed by western blot with 17221-1-AP (HLA-DRA antibody) at dilution of 1:5000 incubated at room temperature for 1.5 hours.



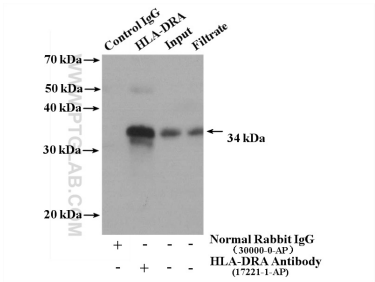
Immunohistochemical analysis of paraffin-embedded human tonsillitis tissue slide using 17221-1-AP (HLA-DRA Antibody) at dilution of 1:200 (under 40x lens).



Immunohistochemical analysis of paraffin-embedded human tonsillitis tissue slide using 17221-1-AP (HLA-DRA Antibody) at dilution of 1:200 (under 10x lens).



Immunofluorescent analysis of (4% PFA) fixed Raji cells using HLA-DRA antibody (17221-1-AP) at dilution of 1:400 and CoraLite® 488-Conjugated AffiniPure Goat Anti-Rabbit IgG(H+L).



IP result of anti-HLA-DRA (IP:17221-1-AP, 4ug; Detection:17221-1-AP 1:1000) with Raji cells lysate 3200 ug.



Immunohistochemical analysis of paraffin-embedded human appendicitis tissue slide using 17221-1-AP (HLA-DRA antibody) at dilution of 1:1000 (under 10x lens). Heat mediated antigen retrieval with Tris-EDTA buffer (pH 9.0).



Immunohistochemical analysis of paraffin-embedded human appendicitis tissue slide using 17221-1-AP (HLA-DRA antibody) at dilution of 1:1000 (under 40x lens). Heat mediated antigen retrieval with Tris-EDTA buffer (pH 9.0).