

For Research Use Only

# RBM11 Polyclonal antibody

Catalog Number: 17220-1-AP

Featured Product

1 Publications



## Basic Information

**Catalog Number:**

17220-1-AP

**Size:**

200 µg/ml

**Source:**

Rabbit

**Isotype:**

IgG

**Immunogen Catalog Number:**

AG11040

**GenBank Accession Number:**

BC030196

**GeneID (NCBI):**

54033

**UNIPROT ID:**

P57052

**Full Name:**

RNA binding motif protein 11

**Calculated MW:**

281 aa, 32 kDa

**Observed MW:**

35 kDa

**Purification Method:**

Antigen affinity purification

**Recommended Dilutions:**

WB 1:200-1:1000

IP 0.5-4.0 µg for 1.0-3.0 mg of total protein lysate

IF 1:50-1:500

## Applications

**Tested Applications:**

IF/ICC, IP, WB, ELISA

**Cited Applications:**

WB

**Species Specificity:**

human

**Cited Species:**

human

**Positive Controls:**

WB : HEK-293 cells,

IP : HEK-293 cells,

IF : HEK-293 cells,

## Background Information

### Notable Publications

Author	Pubmed ID	Journal	Application
Chunhong Fu	34434291	Dis Markers	WB

## Storage

**Storage:**

Store at -20°C. Stable for one year after shipment.

**Storage Buffer:**

PBS with 0.02% sodium azide and 50% glycerol pH 7.3.

Aliquoting is unnecessary for -20°C storage

For technical support and original validation data for this product please contact:

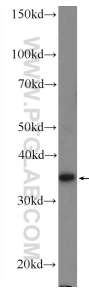
T: 4006900926

E: [Proteintech-CN@ptglab.com](mailto:Proteintech-CN@ptglab.com)

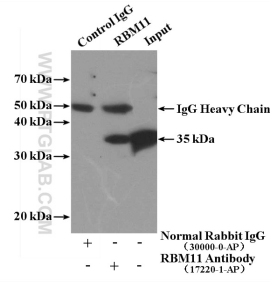
W: [ptgcn.com](http://ptgcn.com)

This product is exclusively available under Proteintech Group brand and is not available to purchase from any other manufacturer.

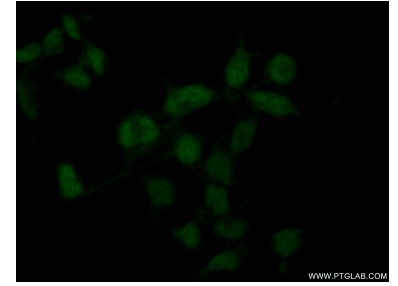
## Selected Validation Data



HEK-293 cells were subjected to SDS PAGE followed by western blot with 17220-1-AP (RBM11 Antibody) at dilution of 1:300 incubated at room temperature for 1.5 hours.



IP result of anti-RBM11 (IP:17220-1-AP, 4ug; Detection:17220-1-AP 1:300) with HEK-293 cells lysate 3000ug.



Immunofluorescent analysis of (10% Formaldehyde) fixed HEK-293 cells using 17220-1-AP (RBM11 antibody) at dilution of 1:50 and Alexa Fluor 488-conjugated AffiniPure Goat Anti-Rabbit IgG(H+L).