

For Research Use Only

# GPD2 Polyclonal antibody

Catalog Number: 17219-1-AP

Featured Product

17 Publications



## Basic Information

### Catalog Number:

17219-1-AP

### Size:

1000 µg/ml

### Source:

Rabbit

### Isotype:

IgG

### Immunogen Catalog Number:

AG11036

### GenBank Accession Number:

BC019874

### GeneID (NCBI):

2820

### UNIPROT ID:

P43304

### Full Name:

glycerol-3-phosphate dehydrogenase  
2 (mitochondrial)

### Calculated MW:

41 kDa, 81 kDa

### Observed MW:

68 kDa

### Purification Method:

Antigen affinity purification

### Recommended Dilutions:

WB 1:1000-1:8000

IP 0.5-4.0 µg for 1.0-3.0 mg of total  
protein lysate

IHC 1:250-1:1000

## Applications

### Tested Applications:

WB, IP, IHC, ELISA

### Cited Applications:

WB, IP

### Species Specificity:

human, mouse, rat

### Cited Species:

human, mouse, rat, rabbit

**Note-IHC: suggested antigen retrieval with  
TE buffer pH 9.0; (\*) Alternatively, antigen  
retrieval may be performed with citrate  
buffer pH 6.0**

### Positive Controls:

WB : HeLa cells, mouse skeletal muscle tissue, mouse  
liver tissue

IP : mouse skeletal muscle tissue,

IHC : mouse testis tissue,

## Background Information

GPD2(Glycerol-3-phosphate dehydrogenase, mitochondrial) belongs to the FAD-dependent glycerol-3-phosphate dehydrogenase family. It is phosphorylated only in capacitated hamster spermatozoa and is noncanonically localized in the acrosome and principal piece in human, mouse, rat, and hamster spermatozoa, though in somatic cells it is localized in the mitochondria. This noncanonical localization may imply a role of GPD2 in acrosome reaction and hyperactivation(PMID:19333995 ).

## Notable Publications

| Author             | Pubmed ID | Journal                  | Application |
|--------------------|-----------|--------------------------|-------------|
| Derick Han         | 27867097  | Free Radic Biol Med      | WB          |
| Maxence Le Vasseur | 34034859  | Elife                    | WB          |
| Shiqi Wu           | 35749365  | Proc Natl Acad Sci U S A | WB          |

## Storage

### Storage:

Store at -20°C. Stable for one year after shipment.

### Storage Buffer:

PBS with 0.02% sodium azide and 50% glycerol pH 7.3.

Aliquoting is unnecessary for -20°C storage

For technical support and original validation data for this product please contact:

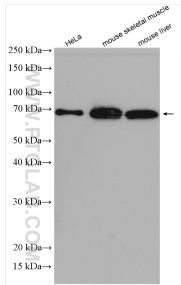
T: 4006900926

E: [Proteintech-CN@ptglab.com](mailto:Proteintech-CN@ptglab.com)

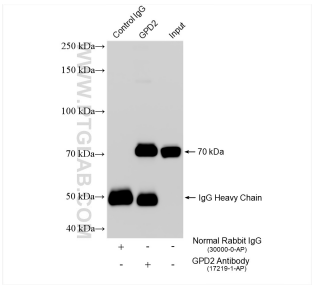
W: [ptgcn.com](http://ptgcn.com)

**This product is exclusively available under Proteintech Group brand and is not available to purchase from any other manufacturer.**

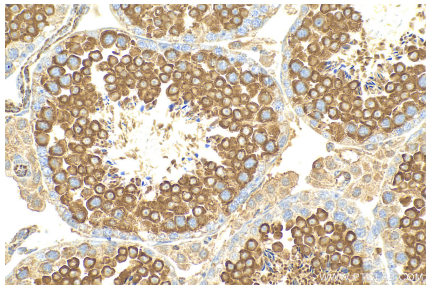
Selected Validation Data



Various lysates were subjected to SDS PAGE followed by western blot with 17219-1-AP (GPD2 antibody) at dilution of 1:4000 incubated at room temperature for 1.5 hours.



IP result of anti-GPD2 (IP:17219-1-AP, 4ug; Detection:17219-1-AP 1:8000) with mouse skeletal muscle tissue lysate 1280 ug.



Immunohistochemical analysis of paraffin-embedded mouse testis tissue slide using 17219-1-AP (GPD2 antibody) at dilution of 1:500 (under 40x lens). Heat mediated antigen retrieval with Tris-EDTA buffer (pH 9.0).