

For Research Use Only

# LYZL1 Polyclonal antibody

Catalog Number: 17207-1-AP

1 Publications



## Basic Information

### Catalog Number:

17207-1-AP

### Size:

300 ug/ml

### Source:

Rabbit

### Isotype:

IgG

### Immunogen Catalog Number:

AG10986

### GenBank Accession Number:

BC021730

### GeneID (NCBI):

84569

### UNIPROT ID:

Q6UWQ5

### Full Name:

lysozyme-like 1

### Calculated MW:

194 aa, 22 kDa

### Observed MW:

22 kDa

### Purification Method:

Antigen affinity purification

### Recommended Dilutions:

WB 1:100-1:500

IHC 1:50-1:500

## Applications

### Tested Applications:

WB, IHC, ELISA

### Cited Applications:

WB

### Species Specificity:

human, mouse, rat

### Cited Species:

human

### Positive Controls:

WB : mouse testis tissue,

IHC : human testis tissue, human lung tissue, human spleen tissue

**Note-IHC: suggested antigen retrieval with TE buffer pH 9.0; (\*) Alternatively, antigen retrieval may be performed with citrate buffer pH 6.0**

## Background Information

LYZL1(Lysozyme-like 1) is also named as LYC2 and belongs to the glycosyl hydrolase 22 family. It is involved in the hydrolysis of 1,4-beta-linkages between N-acetylmuramic acid and N-acetyl-D-glucosamine residues in a peptidoglycan and between N-acetyl-D-glucosamine residues in chitodextrins. LYZL1 has two isoforms with the molecular weight of 17 kDa and 22 kDa. The full length protein has a signal peptide of 19 amino acids and a glycosylation site. This antibody detects the N-terminal of LYZL1.

## Notable Publications

Author	Pubmed ID	Journal	Application
Yueshuai Guo	31424156	Proteomics Clin Appl	WB

## Storage

### Storage:

Store at -20°C. Stable for one year after shipment.

### Storage Buffer:

PBS with 0.02% sodium azide and 50% glycerol pH 7.3.

Aliquoting is unnecessary for -20°C storage

For technical support and original validation data for this product please contact:

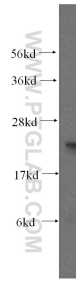
T: 4006900926

E: [Proteintech-CN@ptglab.com](mailto:Proteintech-CN@ptglab.com)

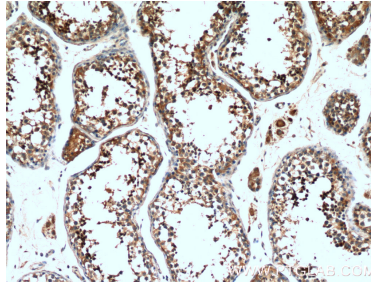
W: [ptgcn.com](http://ptgcn.com)

This product is exclusively available under Proteintech Group brand and is not available to purchase from any other manufacturer.

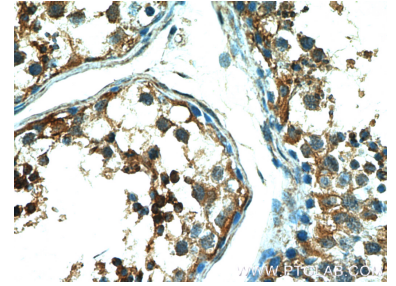
## Selected Validation Data



mouse testis tissue were subjected to SDS PAGE followed by western blot with 17207-1-AP (LYZL1 antibody) at dilution of 1:300 incubated at room temperature for 1.5 hours.



Immunohistochemical analysis of paraffin-embedded human testis tissue slide using 17207-1-AP (LYZL1 Antibody) at dilution of 1:200 (under 10x lens).



Immunohistochemical analysis of paraffin-embedded human testis tissue slide using 17207-1-AP (LYZL1 Antibody) at dilution of 1:200 (under 40x lens).