

For Research Use Only

GBA2 Polyclonal antibody

Catalog Number: 17164-1-AP



Basic Information

Catalog Number:

17164-1-AP

Size:

450 ug/ml

Source:

Rabbit

Isotype:

IgG

Immunogen Catalog Number:

AG10606

GenBank Accession Number:

BC011363

GeneID (NCBI):

57704

UNIPROT ID:

Q9HCG7

Full Name:

glucosidase, beta (bile acid) 2

Calculated MW:

927 aa, 105 kDa

Observed MW:

105 kDa

Purification Method:

Antigen affinity purification

Recommended Dilutions:

WB 1:500-1:2000

Applications

Tested Applications:

WB, ELISA

Species Specificity:

human, mouse, rat

Positive Controls:

WB : human placenta tissue, HeLa cells, mouse brain tissue, rat brain tissue

Background Information

GBA2(Non-lysosomal glucosylceramidase) is also named as KIAA1605, NLGase and belongs to the non-lysosomal glucosylceramidase family. It catalyzes the conversion of glucosylceramide to free glucose and ceramide and is involved in sphingomyelin generation and prevention of glycolipid accumulation. GBA2 contains a putative membrane-spanning domain and 2 potential N-glycosylation sites. However, glycosidase treatment indicated that GBA2 is not a glycoprotein (PMID:11489889). It has 3 isoforms produced by alternative splicing.

Storage

Storage:

Store at -20°C. Stable for one year after shipment.

Storage Buffer:

PBS with 0.02% sodium azide and 50% glycerol pH 7.3.

Aliquoting is unnecessary for -20°C storage

For technical support and original validation data for this product please contact:

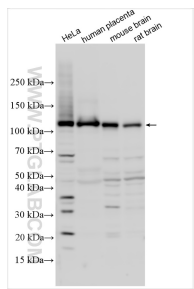
T: 4006900926

E: Proteintech-CN@ptglab.com

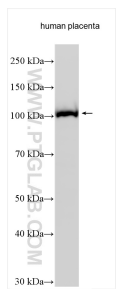
W: ptgcn.com

This product is exclusively available under Proteintech Group brand and is not available to purchase from any other manufacturer.

Selected Validation Data



Various lysates were subjected to SDS PAGE followed by western blot with 17164-1-AP (GBA2 antibody) at dilution of 1:1000 incubated at room temperature for 1.5 hours.



Human placenta tissue were subjected to SDS PAGE followed by western blot with 17164-1-AP (GBA2 antibody) at dilution of 1:1000 incubated at room temperature for 1.5 hours.