

For Research Use Only

LRRC8A/SWELL1 Polyclonal antibody



Catalog Number: 17155-1-AP **1 Publications**

Basic Information

Catalog Number: 17155-1-AP	GenBank Accession Number: BC051322	Purification Method: Antigen affinity purification
Size: 260 µg/ml	GeneID (NCBI): 56262	Recommended Dilutions: WB 1:200-1:1000 IHC 1:50-1:500
Source: Rabbit	UNIPROT ID: Q8IWT6	
Isotype: IgG	Full Name: leucine rich repeat containing 8 family, member A	
Immunogen Catalog Number: AG10062	Calculated MW: 810 aa, 94 kDa	
	Observed MW: 94 kDa	

Applications

Tested Applications: IHC, WB, ELISA	Positive Controls: WB : rat lung tissue, IHC : human colon cancer tissue,
Cited Applications: IHC	
Species Specificity: human, rat	
Cited Species: human	

Note-IHC: suggested antigen retrieval with TE buffer pH 9.0; (*) Alternatively, antigen retrieval may be performed with citrate buffer pH 6.0

Background Information

LRRC8A, also named as SWELL1, KIAA1437 and LRRC8, belongs to the LRRC8 family. LRRC8A is a ubiquitous and integral component of the VRAC and has been reported to be required for regulation of cell volume. It indicates that LRRC8A plays a role in regulating the flow of ions, especially anions, into and out of cells (PMID: 32079488). Additionally, there have been several reports that LRRC8A is critical for differentiation of adipocytes and lymphocytes (PMID: 31323188). The molecular weight of LRRC8A is 94 kDa.

Notable Publications

Author	Pubmed ID	Journal	Application
Yanjie Chen	36632452	Int J Biol Sci	IHC

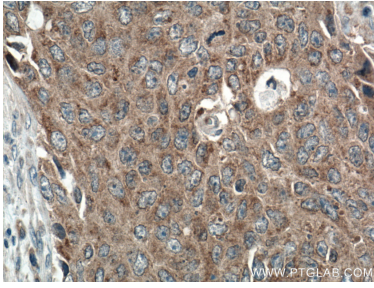
Storage

Storage:
Store at -20°C. Stable for one year after shipment.
Storage Buffer:
PBS with 0.02% sodium azide and 50% glycerol pH 7.3.
Aliquoting is unnecessary for -20°C storage

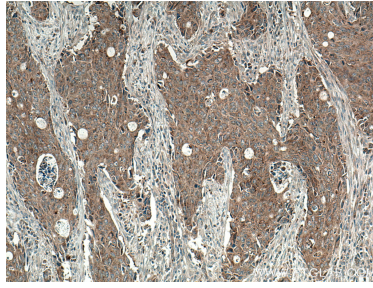
For technical support and original validation data for this product please contact:
T: 4006900926 E: Proteintech-CN@ptglab.com W: ptgcn.com

This product is exclusively available under Proteintech Group brand and is not available to purchase from any other manufacturer.

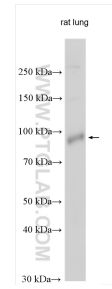
Selected Validation Data



Immunohistochemical analysis of paraffin-embedded human colon cancer tissue slide using 17155-1-AP (LRRC8A antibody) at dilution of 1:200 (under 40x lens. Heat mediated antigen retrieval with Tris-EDTA buffer (pH 9.0).



Immunohistochemical analysis of paraffin-embedded human colon cancer tissue slide using 17155-1-AP (LRRC8A antibody) at dilution of 1:200 (under 10x lens. Heat mediated antigen retrieval with Tris-EDTA buffer (pH 9.0).



rat lung tissue were subjected to SDS PAGE followed by western blot with 17155-1-AP (LRRC8A/SWELL1 antibody) at dilution of 1:300 incubated at room temperature for 1.5 hours.