

## FAM160B2 Polyclonal antibody

Catalog Number: 17147-1-AP

1 Publications

## Basic Information

## Catalog Number:

17147-1-AP

## Size:

260 µg/ml

## Source:

Rabbit

## Isotype:

IgG

## Immunogen Catalog Number:

AG10920

## GenBank Accession Number:

BC012865

## GeneID (NCBI):

64760

## UNIPROT ID:

Q86V87

## Full Name:

family with sequence similarity 160, member B2

## Calculated MW:

743 aa, 82 kDa

## Observed MW:

82 kDa

## Purification Method:

Antigen affinity purification

## Recommended Dilutions:

WB 1:500-1:1000

IP 0.5-4.0 µg for 1.0-3.0 mg of total protein lysate

IHC 1:20-1:200

IF/ICC 1:50-1:500

## Applications

## Tested Applications:

WB, IHC, IF/ICC, IP, ELISA

## Cited Applications:

WB

## Species Specificity:

human

## Cited Species:

human

**Note-IHC: suggested antigen retrieval with TE buffer pH 9.0; (\*) Alternatively, antigen retrieval may be performed with citrate buffer pH 6.0**

## Positive Controls:

WB : human brain tissue,

IP : HepG2 cells,

IHC : human brain tissue,

IF/ICC : A549 cells,

## Background Information

FAM160B2, also named as RAI16, may play a role in early lens development in mammals and in upregulation of genes in CD34+ cells in coronary artery disease patients.

## Notable Publications

Author	Pubmed ID	Journal	Application
Cui-Ling Ding	32014455	Mol Cell Endocrinol	WB

## Storage

## Storage:

Store at -20°C. Stable for one year after shipment.

## Storage Buffer:

PBS with 0.02% sodium azide and 50% glycerol pH 7.3.

Aliquoting is unnecessary for -20°C storage

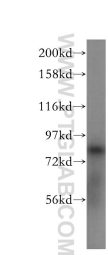
For technical support and original validation data for this product please contact:

T: 4006900926

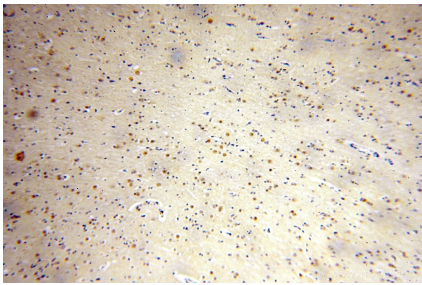
E: [Proteintech-CN@ptglab.com](mailto:Proteintech-CN@ptglab.com)W: [ptgcn.com](http://ptgcn.com)

This product is exclusively available under Proteintech Group brand and is not available to purchase from any other manufacturer.

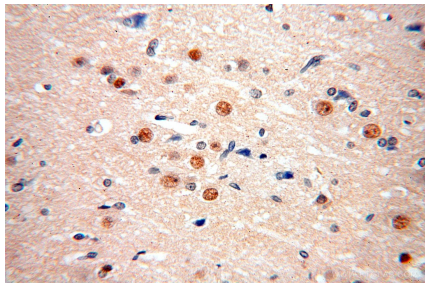
Selected Validation Data



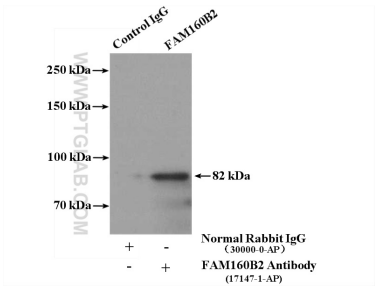
human brain tissue were subjected to SDS PAGE followed by western blot with 17147-1-AP (FAM160B2 antibody) at dilution of 1:500 incubated at room temperature for 1.5 hours.



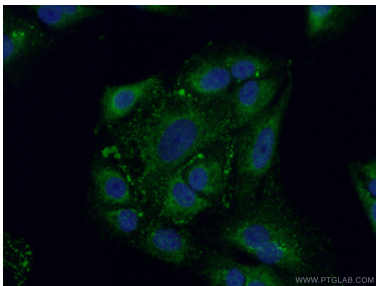
Immunohistochemical analysis of paraffin-embedded human brain using 17147-1-AP (FAM160B2 antibody) at dilution of 1:100 (under 10x lens).



Immunohistochemical analysis of paraffin-embedded human brain using 17147-1-AP (FAM160B2 antibody) at dilution of 1:100 (under 40x lens).



IP result of anti-FAM160B2 (IP:17147-1-AP, 4ug; Detection:17147-1-AP 1:300) with HepG2 cells lysate 3200ug.



Immunofluorescent analysis of (-20℃ Ethanol) fixed A549 cells using 17147-1-AP (FAM160B2 antibody) at dilution of 1:50 and Alexa Fluor 488-conjugated AffiniPure Goat Anti-Rabbit IgG(H+L).