

For Research Use Only

ARHGEF28 Polyclonal antibody, PBS Only

Catalog Number: 17144-1-PBS



Basic Information

Catalog Number:

17144-1-PBS

Source:

Rabbit

Isotype:

IgG

Immunogen Catalog Number:

AG10915

GenBank Accession Number:

BC012946

GeneID (NCBI):

64283

UNIPROT ID:

Q8N1W1

Full Name:

Rho-guanine nucleotide exchange factor

Calculated MW:

192 kDa

Observed MW:

192 kDa

Purification Method:

Antigen affinity purification

Applications

Tested Applications:

WB, Indirect ELISA

Species Specificity:

human

Background Information

ARHGEF28, also known as RGNEF or p190RhoGEF, is a 190 kDa RNA binding protein (RBP) that contains a Dbl/PH domain capable of RhoA activation. ARHGEF28 interacts with low molecular weight neurofilament mRNA and may be involved in the formation of amyotrophic lateral sclerosis neurofilament aggregates.

Storage

Storage:

Store at -80°C.

The product is shipped with ice packs. Upon receipt, store it immediately at -80°C

Storage Buffer:

PBS only, pH7.3

For technical support and original validation data for this product please contact:

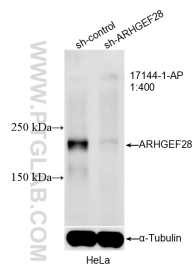
T: 4006900926

E: Proteintech-CN@ptglab.com

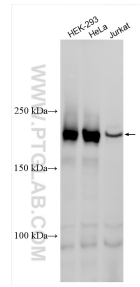
W: ptgcn.com

This product is exclusively available under Proteintech Group brand and is not available to purchase from any other manufacturer.

Selected Validation Data



WB result of ARHGEF28 antibody (17144-1-AP; 1:400; incubated at room temperature for 1.5 hours) with sh-Control and sh-ARHGEF28 transfected HeLa cells. This data was developed using the same antibody clone with 17144-1-PBS in a different storage buffer formulation.



Various lysates were subjected to SDS PAGE followed by western blot with 17144-1-AP (RGNEF antibody) at dilution of 1:300 incubated at room temperature for 1.5 hours. This data was developed using the same antibody clone with 17144-1-PBS in a different storage buffer formulation.