

For Research Use Only

CKAP2L Polyclonal antibody

Catalog Number: 17143-1-AP

Featured Product

2 Publications



Basic Information

Catalog Number:

17143-1-AP

Size:

350 µg/ml

Source:

Rabbit

Isotype:

IgG

Immunogen Catalog Number:

AG10909

GenBank Accession Number:

BC036217

GeneID (NCBI):

150468

UNIPROT ID:

Q8IYA6

Full Name:

cytoskeleton associated protein 2-like

Calculated MW:

745 aa, 84 kDa

Observed MW:

84 kDa

Purification Method:

Antigen affinity purification

Recommended Dilutions:

WB 1:1000-1:5000

IP 0.5-4.0 µg for 1.0-3.0 mg of total protein lysate

Applications

Tested Applications:

IP, WB, ELISA

Cited Applications:

WB, IHC

Species Specificity:

human

Cited Species:

human, mouse

Positive Controls:

WB : HepG2 cells, K-562 cells, Jurkat cells

IP : Jurkat cells,

Background Information

Notable Publications

Author	Pubmed ID	Journal	Application
Penghui Wang	32509063	Int J Clin Exp Pathol	WB
Yaqian Shi	37665628	FASEB J	WB,IHC

Storage

Storage:

Store at -20°C. Stable for one year after shipment.

Storage Buffer:

PBS with 0.02% sodium azide and 50% glycerol pH 7.3.

Aliquoting is unnecessary for -20°C storage

For technical support and original validation data for this product please contact:

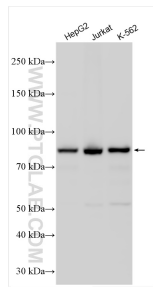
T: 4006900926

E: Proteintech-CN@ptglab.com

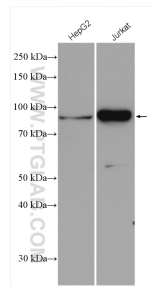
W: ptgcn.com

This product is exclusively available under Proteintech Group brand and is not available to purchase from any other manufacturer.

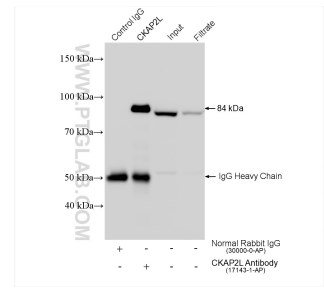
Selected Validation Data



Various lysates were subjected to SDS PAGE followed by western blot with 17143-1-AP (CKAP2L antibody) at dilution of 1:2500 incubated at room temperature for 1.5 hours.



Various lysates were subjected to SDS PAGE followed by western blot with 17143-1-AP (CKAP2L antibody) at dilution of 1:1000 incubated at room temperature for 1.5 hours.



IP result of anti-CKAP2L (IP:17143-1-AP, 4ug; Detection:17143-1-AP 1:2000) with Jurkat cells lysate 1560 ug.