

For Research Use Only

PDHA2/PDHA1 Polyclonal antibody, PBS Only

Catalog Number: 17134-1-PBS



Basic Information

Catalog Number:

17134-1-PBS

Source:

Rabbit

Isotype:

IgG

Immunogen Catalog Number:

AG10882

GenBank Accession Number:

BC030697

GeneID (NCBI):

5161

UNIPROT ID:

P29803

Full Name:

pyruvate dehydrogenase (lipoamide)

alpha 2

Calculated MW:

388 aa, 43 kDa

Observed MW:

40-43 kDa

Purification Method:

Antigen affinity purification

Applications

Tested Applications:

WB, IHC, Indirect ELISA

Species Specificity:

human, mouse, rat

Background Information

PDHA2 (Pyruvate Dehydrogenase E1 Subunit Alpha 2) is a testis-specific mitochondrial enzyme encoded by the PDHA2 gene on human chromosome 4q22.3. The gene exhibits 84% nucleotide sequence similarity with the X-linked PDHA1, supporting the hypothesis that PDHA2 originated through retrotransposition of PDHA1 to an autosomal location. This antibody can recognize both PDHA2 and PDHA1.

Storage

Storage:

Store at -80°C.

The product is shipped with ice packs. Upon receipt, store it immediately at -80°C

Storage Buffer:

PBS only, pH7.3

For technical support and original validation data for this product please contact:

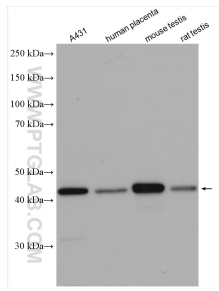
T: 4006900926

E: Proteintech-CN@ptglab.com

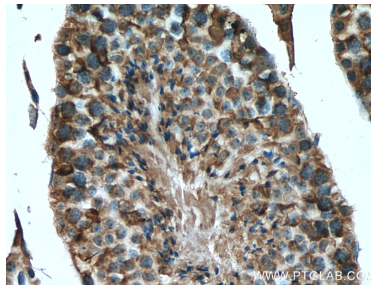
W: ptgcn.com

This product is exclusively available under Proteintech Group brand and is not available to purchase from any other manufacturer.

Selected Validation Data



Various lysates were subjected to SDS PAGE followed by western blot with 17134-1-AP (PDHA2 antibody) at dilution of 1:3000 incubated at room temperature for 1.5 hours. This data was developed using the same antibody clone with 17134-1-PBS in a different storage buffer formulation.



Immunohistochemical analysis of paraffin-embedded mouse testis tissue slide using 17134-1-AP (PDHA2 antibody) at dilution of 1:200 (under 40x lens). Heat mediated antigen retrieval with Tris-EDTA buffer (pH 9.0). This data was developed using the same antibody clone with 17134-1-PBS in a different storage buffer formulation.