

KLHL11 Polyclonal antibody

Catalog Number: 17117-1-AP

Basic Information

Catalog Number:

17117-1-AP

Size:

700 µg/ml

Source:

Rabbit

Isotype:

IgG

Immunogen Catalog Number:

AG10805

GenBank Accession Number:

BC034470

GeneID (NCBI):

55175

UNIPROT ID:

Q9NVR0

Full Name:

kelch-like 11 (Drosophila)

Calculated MW:

708 aa, 80 kDa

Observed MW:

80 kDa

Purification Method:

Antigen affinity purification

Recommended Dilutions:

WB 1:200-1:1000

Applications

Tested Applications:

WB, ELISA

Species Specificity:

human

Positive Controls:

WB : COLO 320 cells, MCF-7 cells

Background Information

KLHL11 is a component of a cullin-RING-based BCR (BTB-CUL3-RBX1) E3 ubiquitin-protein ligase complex mediating ubiquitination of target proteins. The presence of antibodies directed against KLHL11 has been identified as biomarker of a paraneoplastic neurological syndrome. The downregulation of KLHL11 may contribute to the disease progression, owing to its putative function in protein quality control. The calculated molecular weight of KLHL11 is 80 kDa (PMID: 34312900).

Storage

Storage:

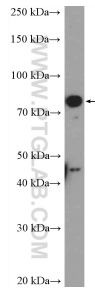
Store at -20°C. Stable for one year after shipment.

Storage Buffer:

PBS with 0.02% sodium azide and 50% glycerol pH 7.3.

Aliquoting is unnecessary for -20°C storage

Selected Validation Data



COLO 320 cells were subjected to SDS PAGE followed by western blot with 17117-1-AP (KLHL11 Antibody) at dilution of 1:300 incubated at room temperature for 1.5 hours.