

For Research Use Only

PPWD1 Polyclonal antibody

Catalog Number: 17106-1-AP



Basic Information

Catalog Number:

17106-1-AP

Size:

200 µg/ml

Source:

Rabbit

Isotype:

IgG

Immunogen Catalog Number:

AG10785

GenBank Accession Number:

BC015385

GeneID (NCBI):

23398

UNIPROT ID:

Q96BP3

Full Name:

peptidylprolyl isomerase domain and
WD repeat containing 1

Calculated MW:

646 aa, 74 kDa

Observed MW:

65-66 kDa

Purification Method:

Antigen affinity purification

Recommended Dilutions:

WB 1:500-1:1000

Applications

Tested Applications:

WB, ELISA

Species Specificity:

human, mouse, rat

Positive Controls:

WB : Sp2/O cells, HEK-293 cells, HeLa cells, Jurkat cells,
mouse brain tissue, mouse kidney tissue, mouse liver
tissue, mouse testis tissue

Background Information

Peptidylprolyl isomerase domain and WD repeat-containing protein1 belongs to cyclophilin family. PPWD1 accelerate the folding of proteins. It catalyzes the cis-trans isomerization of proline imidic peptide bonds in oligopeptides. May be involved in pre-mRNA splicing. This antibody recognizes the C-terminal of PPWD1.

Storage

Storage:

Store at -20°C. Stable for one year after shipment.

Storage Buffer:

PBS with 0.02% sodium azide and 50% glycerol pH 7.3.

Aliquoting is unnecessary for -20°C storage

For technical support and original validation data for this product please contact:

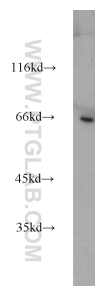
T: 4006900926

E: Proteintech-CN@ptglab.com

W: ptgcn.com

This product is exclusively available under Proteintech Group brand and is not available to purchase from any other manufacturer.

Selected Validation Data



Sp2/0 cells were subjected to SDS PAGE followed by western blot with 17106-1-AP (PPWD1 antibody) at dilution of 1:1000 incubated at room temperature for 1.5 hours.