

For Research Use Only

RPL24 Polyclonal antibody

Catalog Number:17082-1-AP

Featured Product

17 Publications



Basic Information

Catalog Number:

17082-1-AP

Size:

450 µg/ml

Source:

Rabbit

Isotype:

IgG

Immunogen Catalog Number:

AG7085

GenBank Accession Number:

BC000690

GeneID (NCBI):

6152

UNIPROT ID:

P83731

Full Name:

ribosomal protein L24

Calculated MW:

18 kDa

Observed MW:

21-23 kDa

Purification Method:

Antigen affinity purification

Recommended Dilutions:

WB 1:5000-1:50000

IP 0.5-4.0 µg for 1.0-3.0 mg of total protein lysate

IHC 1:50-1:500

IF/ICC 1:10-1:100

Applications

Tested Applications:

WB, IHC, IF/ICC, IP, ELISA

Cited Applications:

WB, IHC, IF, IP, RIP

Species Specificity:

human

Cited Species:

human, mouse, xenopus

Positive Controls:

WB : A549 cells, HEK-293 cells, Jurkat cells

IP : HEK-293 cells,

IHC : human placenta tissue, human kidney tissue, human liver tissue, human spleen tissue, human ovary tissue

IF/ICC : HeLa cells,

Note-IHC: suggested antigen retrieval with TE buffer pH 9.0; (*) Alternatively, antigen retrieval may be performed with citrate buffer pH 6.0

Background Information

The mammalian ribosome comprises 79 ribosomal proteins and four rRNAs, which combine in equimolar ratios to form the small (40S) and large (60S) subunits. Ribosome proteins are a direct and critical target of the PI3K pathway in promoting growth.[PMID:15289434]. RPL24 is one component of the large (60S) subunits that promote the translation of uORF-containing mRNAsgene The mutation in Rpl24 result in impairment of mRNA splicing and L24 production, which in turn affects ribosome biogenesis, protein synthesis and the cell cycle. PMID:20799971]. Also RPL24 (ribosomal protein L24) is a key factor for translation reinitiation of downstream ORFs on the polycistronic cauliflower mosaic virus 35S RNA transcription unit, and may have a role in gynoeucium development. [PMID:15270688]

Notable Publications

Author	Pubmed ID	Journal	Application
Kaosheng Lv	33711283	Cell Stem Cell	WB
Roberta Cagnetta	30008298	Neuron	IF
Sridevi Challa	34314702	Cell	WB

Storage

Storage:

Store at -20°C. Stable for one year after shipment.

Storage Buffer:

PBS with 0.02% sodium azide and 50% glycerol pH 7.3.

Aliquoting is unnecessary for -20°C storage

For technical support and original validation data for this product please contact:

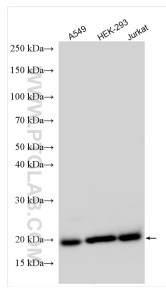
T: 4006900926

E: Proteintech-CN@ptglab.com

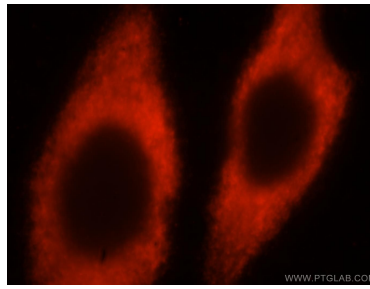
W: ptgcn.com

This product is exclusively available under Proteintech Group brand and is not available to purchase from any other manufacturer.

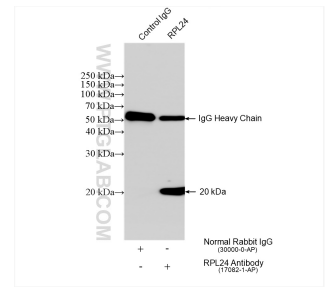
Selected Validation Data



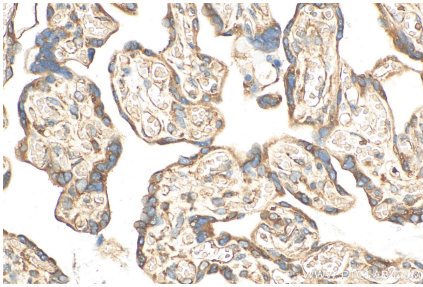
Various lysates were subjected to SDS PAGE followed by western blot with 17082-1-AP (RPL24 antibody) at dilution of 1:30000 incubated at room temperature for 1.5 hours.



Immunofluorescent analysis of HeLa cells, using RPL24 antibody 17082-1-AP at 1:25 dilution and Rhodamine-labeled goat anti-rabbit IgG (red).



IP result of anti-RPL24 (IP:17082-1-AP, 4ug; Detection:17082-1-AP 1:20000) with HEK-293 cells lysate 920 ug.



Immunohistochemical analysis of paraffin-embedded human placenta tissue slide using 17082-1-AP (RPL24 antibody) at dilution of 1:200 (under 40x lens). Heat mediated antigen retrieval with Tris-EDTA buffer (pH 9.0).