

For Research Use Only

# LATS1 Polyclonal antibody

Catalog Number: 17049-1-AP

Featured Product

56 Publications



## Basic Information

### Catalog Number:

17049-1-AP

### Concentration:

1000 µg/ml

### Source:

Rabbit

### Isotype:

IgG

### Immunogen Catalog Number:

AG10709

### GenBank Accession Number:

BC015665

### GeneID (NCBI):

9113

### UNIPROT ID:

O95835

### Full Name:

LATS, large tumor suppressor, homolog 1 (Drosophila)

### Calculated MW:

15 kDa, 127 kDa

### Observed MW:

140-150 kDa, 120 kDa

### Purification Method:

Antigen affinity purification

### Recommended Dilutions:

WB 1:500-1:2000

IHC 1:50-1:500

IF/ICC 1:50-1:500

## Applications

### Tested Applications:

WB, IHC, IF/ICC, ELISA

### Cited Applications:

WB, IHC, IF, RIP

### Species Specificity:

human, mouse

### Cited Species:

human, mouse, pig, sheep

**Note-IHC: suggested antigen retrieval with TE buffer pH 9.0; (\*) Alternatively, antigen retrieval may be performed with citrate buffer pH 6.0**

### Positive Controls:

**WB** : HepG2 cells, K-562 cells, SH-SY5Y cells, HT-29 cells, A549 cells, C2C12 cells

**IHC** : human breast cancer tissue, human testis tissue

**IF/ICC** : HeLa cells,

## Background Information

LATS1 (Large tumor suppressor homolog 1) is also named as WARTS and belongs to the AGC Ser/Thr protein kinase family. The gene encodes a highly conserved (from fly to human) protein kinase that plays a crucial role in the prevention of tumor formation by controlling the progression of mitosis. The expression of both long (170 kDa) and short lats1 isoforms (120 kDa) in vertebrate retinal cells raises the possibility that these lats1 proteins may act as negative key regulators of the cell cycle each of them performing a unique role (PMID:15777619). In mammalian cells, LATS1 was phosphorylated in a cell cycle-dependent manner and complexed with CDC2 in early mitosis (PMID:9988268). LATS1 also can be detected as 120 kDa and 140-150 kDa, and play a key role in the regulation of Hippo pathway (PMID: 27940445).

## Notable Publications

Author	Pubmed ID	Journal	Application
Zakiyatul Faizah	32987643	Molecules	WB
Deqiang Kong	34508829	Biochim Biophys Acta Mol Basis Dis	WB
Xiehong Liu	30256412	J Cell Physiol	WB

## Storage

### Storage:

Store at -20°C. Stable for one year after shipment.

### Storage Buffer:

PBS with 0.02% sodium azide and 50% glycerol pH 7.3.

Aliquoting is unnecessary for -20°C storage

For technical support and original validation data for this product please contact:

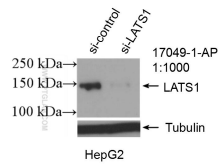
T: 4006900926

E: [Proteintech-CN@ptglab.com](mailto:Proteintech-CN@ptglab.com)

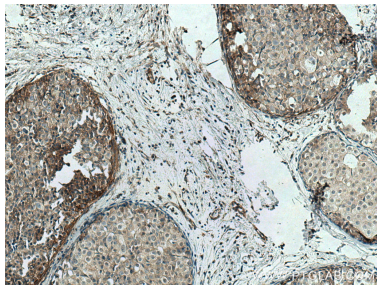
W: [ptgcn.com](http://ptgcn.com)

**This product is exclusively available under Proteintech Group brand and is not available to purchase from any other manufacturer.**

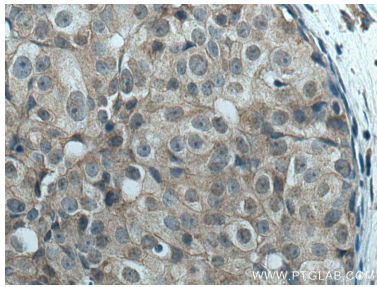
Selected Validation Data



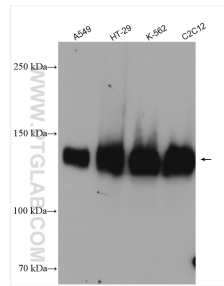
WB result of LATS1 antibody (17049-1-AP; 1:1000; incubated at room temperature for 1.5 hours) with sh-Control and sh-LATS1 transfected HepG2 cells.



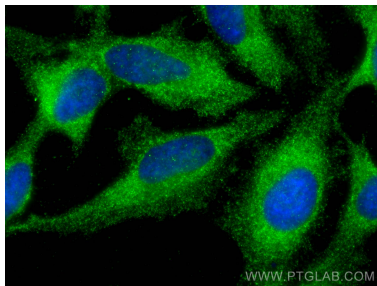
Immunohistochemical analysis of paraffin-embedded human breast cancer tissue slide using 17049-1-AP (LATS1 antibody) at dilution of 1:200 (under 10x lens). Heat mediated antigen retrieval with Tris-EDTA buffer (pH 9.0).



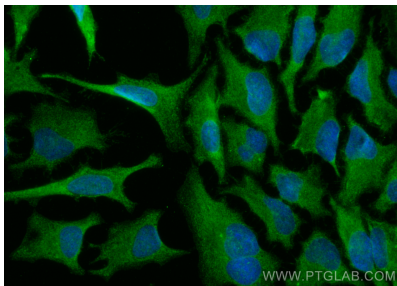
Immunohistochemical analysis of paraffin-embedded human breast cancer tissue slide using 17049-1-AP (LATS1 antibody) at dilution of 1:200 (under 40x lens). Heat mediated antigen retrieval with Tris-EDTA buffer (pH 9.0).



Various lysates were subjected to SDS PAGE followed by western blot with 17049-1-AP (LATS1 antibody) at dilution of 1:6000 incubated at room temperature for 1.5 hours.



Immunofluorescent analysis of (-20°C Methanol) fixed HeLa cells using LATS1 antibody (17049-1-AP) at dilution of 1:200 and Coralite®488-Conjugated Goat Anti-Rabbit IgG(H+L).



Immunofluorescent analysis of (-20°C Methanol) fixed HeLa cells using LATS1 antibody (17049-1-AP) at dilution of 1:200 and Coralite®488-Conjugated Goat Anti-Rabbit IgG(H+L).