

For Research Use Only

# MRPS11 Polyclonal antibody

Catalog Number: 17041-1-AP

1 Publications



## Basic Information

Catalog Number:

17041-1-AP

Size:

350 µg/ml

Source:

Rabbit

Isotype:

IgG

Immunogen Catalog Number:

AG10570

GenBank Accession Number:

BC012489

GeneID (NCBI):

64963

UNIPROT ID:

P82912

Full Name:

mitochondrial ribosomal protein S11

Calculated MW:

193 aa, 20 kDa

Observed MW:

17 kDa

Purification Method:

Antigen affinity purification

Recommended Dilutions:

WB 1:500-1:2000

IHC 1:20-1:200

## Applications

Tested Applications:

IHC, WB, ELISA

Cited Applications:

WB

Species Specificity:

human, mouse, rat

Cited Species:

mouse

**Note-IHC: suggested antigen retrieval with TE buffer pH 9.0; (\*) Alternatively, antigen retrieval may be performed with citrate buffer pH 6.0**

Positive Controls:

WB : HEK-293 cells, HepG2 cells

IHC : human kidney tissue,

## Background Information

### Notable Publications

Author	Pubmed ID	Journal	Application
Christopher Lowden	34525369	Cell Rep	WB

## Storage

Storage:

Store at -20°C. Stable for one year after shipment.

Storage Buffer:

PBS with 0.02% sodium azide and 50% glycerol pH 7.3.

Aliquoting is unnecessary for -20°C storage

For technical support and original validation data for this product please contact:

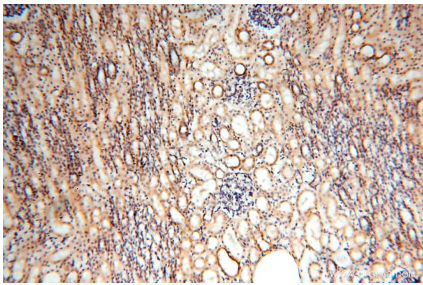
T: 4006900926

E: [Proteintech-CN@ptglab.com](mailto:Proteintech-CN@ptglab.com)

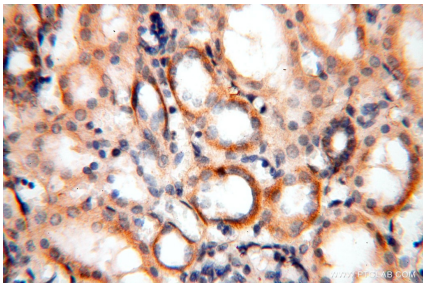
W: [ptgcn.com](http://ptgcn.com)

This product is exclusively available under Proteintech Group brand and is not available to purchase from any other manufacturer.

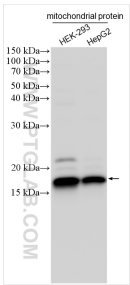
Selected Validation Data



Immunohistochemical analysis of paraffin-embedded human kidney using 17041-1-AP (MRPS11 antibody) at dilution of 1:100 (under 10x lens).



Immunohistochemical analysis of paraffin-embedded human kidney using 17041-1-AP (MRPS11 antibody) at dilution of 1:100 (under 40x lens).



Various lysates were subjected to SDS PAGE followed by western blot with 17041-1-AP (MRPS11 antibody) at dilution of 1:1000 incubated at room temperature for 1.5 hours.