

For Research Use Only

# GRK5 Polyclonal antibody

Catalog Number: 17032-1-AP

Featured Product

10 Publications



## Basic Information

Catalog Number:

17032-1-AP

Concentration:

500 µg/ml

Source:

Rabbit

Isotype:

IgG

Immunogen Catalog Number:

AG10511

GenBank Accession Number:

BC064506

GeneID (NCBI):

2869

UNIPROT ID:

P34947

Full Name:

G protein-coupled receptor kinase 5

Calculated MW:

590 aa, 68 kDa

Observed MW:

70 kDa

Purification Method:

Antigen affinity purification

Recommended Dilutions:

WB 1:1000-1:4000

IHC 1:50-1:500

## Applications

Tested Applications:

WB, IHC, ELISA

Cited Applications:

WB, IHC, IF

Species Specificity:

human, mouse, rat

Cited Species:

human, mouse, rat

**Note-IHC: suggested antigen retrieval with TE buffer pH 9.0; (\*) Alternatively, antigen retrieval may be performed with citrate buffer pH 6.0**

Positive Controls:

**WB**: HeLa cells, human skeletal muscle tissue, HepG2 cells, mouse skeletal muscle tissue, rat skeletal muscle tissue

**IHC**: human skeletal muscle tissue, mouse heart tissue

## Background Information

GRK5, also named as GPRK5, belongs to the protein kinase superfamily, AGC Ser/Thr protein kinase family and GPRK subfamily. It is Serine/threonine kinase that phosphorylates preferentially the activated forms of a variety of G-protein-coupled receptors (GPCRs). Phosphorylation of ARRB1 by GRK5 inhibits G-protein independent MAPK1/MAPK3 signaling downstream of 5HT<sub>4</sub>-receptors. GRK5 is crucial for proper neuronal morphogenesis and the establishment of functional neuronal circuitry.

## Notable Publications

Author	Pubmed ID	Journal	Application
Masakazu Toya	34006987	Sci Rep	IHC,IF
Takuya Sueishi	31696655	Arthritis Rheumatol	IHC,IF
Xiaobai He	32112783	Biochim Biophys Acta Mol Cell Res	WB

## Storage

Storage:

Store at -20°C. Stable for one year after shipment.

Storage Buffer:

PBS with 0.02% sodium azide and 50% glycerol pH 7.3.

Aliquoting is unnecessary for -20°C storage

For technical support and original validation data for this product please contact:

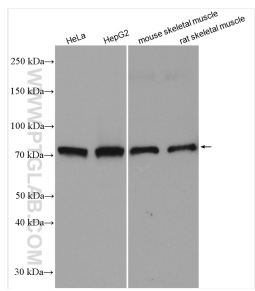
T: 4006900926

E: [Proteintech-CN@ptglab.com](mailto:Proteintech-CN@ptglab.com)

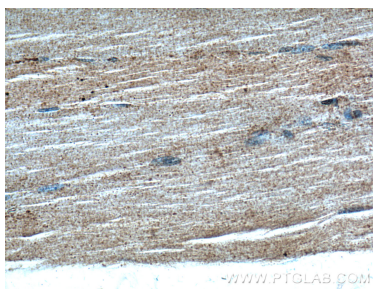
W: [ptgcn.com](http://ptgcn.com)

**This product is exclusively available under Proteintech Group brand and is not available to purchase from any other manufacturer.**

# Selected Validation Data



Various lysates were subjected to SDS PAGE followed by western blot with 17032-1-AP (GRK5 antibody) at dilution of 1:2000 incubated at room temperature for 1.5 hours.



Immunohistochemical analysis of paraffin-embedded human skeletal muscle tissue slide using 17032-1-AP (GRK5 Antibody) at dilution of 1:200 (under 40x lens).



Immunohistochemical analysis of paraffin-embedded human skeletal muscle tissue slide using 17032-1-AP (GRK5 Antibody) at dilution of 1:200 (under 10x lens).