

For Research Use Only

# RPL18 Polyclonal antibody

Catalog Number: 17029-1-AP

2 Publications



## Basic Information

Catalog Number:

17029-1-AP

Size:

170 µg/ml

Source:

Rabbit

Isotype:

IgG

Immunogen Catalog Number:

AG10474

GenBank Accession Number:

BC009708

GeneID (NCBI):

6141

UNIPROT ID:

Q07020

Full Name:

ribosomal protein L18

Calculated MW:

188 aa, 22 kDa

Observed MW:

22-26 kDa

Purification Method:

Antigen affinity purification

Recommended Dilutions:

WB 1:500-1:1000

## Applications

Tested Applications:

WB, ELISA

Cited Applications:

WB

Species Specificity:

human, mouse, rat

Cited Species:

human, pig

Positive Controls:

WB : HeLa cells, HEK-293 cells, HepG2 cells

## Background Information

### Notable Publications

Author	Pubmed ID	Journal	Application
Qinghe Zhu	36084747	Virus Res	WB
Magdalena Wolczyk	37123244	iScience	WB

## Storage

Storage:

Store at -20°C. Stable for one year after shipment.

Storage Buffer:

PBS with 0.02% sodium azide and 50% glycerol pH 7.3.

Aliquoting is unnecessary for -20°C storage

For technical support and original validation data for this product please contact:

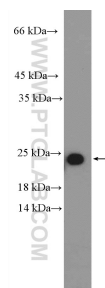
T: 4006900926

E: [Proteintech-CN@ptglab.com](mailto:Proteintech-CN@ptglab.com)

W: [ptgcn.com](http://ptgcn.com)

This product is exclusively available under Proteintech Group brand and is not available to purchase from any other manufacturer.

## Selected Validation Data



HeLa cells were subjected to SDS PAGE followed by western blot with 17029-1-AP (RPL18 Antibody) at dilution of 1:600 incubated at room temperature for 1.5 hours.