

For Research Use Only

# CRLF1 Polyclonal antibody

Catalog Number: 17027-1-AP



## Basic Information

<b>Catalog Number:</b> 17027-1-AP	<b>GenBank Accession Number:</b> BC044634	<b>Purification Method:</b> Antigen affinity purification
<b>Size:</b> 210 µg/ml	<b>GeneID (NCBI):</b> 9244	
<b>Source:</b> Rabbit	<b>UNIPROT ID:</b> O75462	
<b>Isotype:</b> IgG	<b>Full Name:</b> cytokine receptor-like factor 1	
<b>Immunogen Catalog Number:</b> AG10382	<b>Calculated MW:</b> 422 aa, 46 kDa	

## Applications

**Tested Applications:**  
IHC, ELISA

**Species Specificity:**  
human

## Background Information

### Storage

**Storage:**  
Store at -20°C. Stable for one year after shipment.

**Storage Buffer:**  
PBS with 0.02% sodium azide and 50% glycerol pH 7.3.

Aliquoting is unnecessary for -20°C storage

For technical support and original validation data for this product please contact:

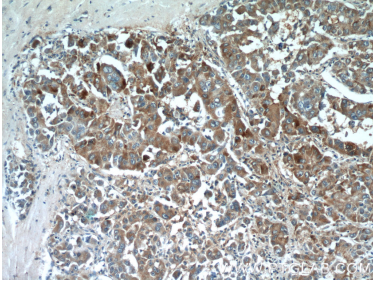
T: 4006900926

E: [Proteintech-CN@ptglab.com](mailto:Proteintech-CN@ptglab.com)

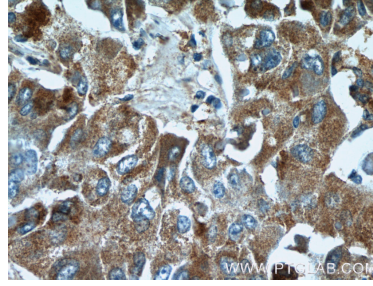
W: [ptgcn.com](http://ptgcn.com)

This product is exclusively available under Proteintech Group brand and is not available to purchase from any other manufacturer.

## Selected Validation Data



Immunohistochemical analysis of paraffin-embedded human liver cancer tissue slide using 17027-1-AP (CRLF1 Antibody) at dilution of 1:50 (under 10x lens).



Immunohistochemical analysis of paraffin-embedded human liver cancer tissue slide using 17027-1-AP (CRLF1 Antibody) at dilution of 1:50 (under 40x lens).