

# KDELC1 Polyclonal antibody

Catalog Number: 17018-1-AP

## Basic Information

**Catalog Number:**

17018-1-AP

**Size:**

130 µg/ml

**Source:**

Rabbit

**Isotype:**

IgG

**Immunogen Catalog Number:**

AG9999

**GenBank Accession Number:**

BC001297

**GeneID (NCBI):**

79070

**UNIPROT ID:**

Q6UW63

**Full Name:**

KDEL (Lys-Asp-Glu-Leu) containing 1

**Calculated MW:**

58 kDa

**Observed MW:**

50 kDa

**Purification Method:**

Antigen affinity purification

## Applications

**Tested Applications:**

WB, ELISA

**Species Specificity:**

human

## Background Information

KDELC1, also named as EP58 and ERp58, belongs to the KDELC family. Soluble proteins in the endoplasmic reticulum (ER) contain a specific carboxyterminal sequence KDEL (Lys-Asp-Glu-Leu) and include the coat proteins required for vesicle budding from the ER. KDELC1 shares no significant homology to any of the known ER-resident proteins. It is primarily expressed in embryo, placenta and adult heart.

## Storage

**Storage:**

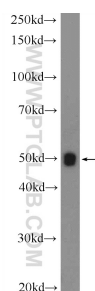
Store at -20°C. Stable for one year after shipment.

**Storage Buffer:**

PBS with 0.02% sodium azide and 50% glycerol pH 7.3.

Aliquoting is unnecessary for -20°C storage

## Selected Validation Data



SMMC-7721 cells were subjected to SDS PAGE followed by western blot with 17018-1-AP (KDEL C1 Antibody) at dilution of 1:300 incubated at room temperature for 1.5 hours.