

For Research Use Only

# ADPRM Polyclonal antibody

Catalog Number: 17017-1-AP



## Basic Information

Catalog Number:

17017-1-AP

Concentration:

350 ug/ml

Source:

Rabbit

Isotype:

IgG

Immunogen Catalog Number:

AG9997

GenBank Accession Number:

BC001294

GeneID (NCBI):

56985

UNIPROT ID:

Q3LIE5

Full Name:

chromosome 17 open reading frame

48

Calculated MW:

40 kDa

Observed MW:

45 kDa

Purification Method:

Antigen affinity purification

Recommended Dilutions:

WB 1:1000-1:4000

## Applications

Tested Applications:

WB, ELISA

Species Specificity:

human, mouse, rat, pig

Positive Controls:

WB : mouse brain tissue, rat brain tissue, pig brain tissue

## Background Information

ADPRM (ADP-ribose/CDP-alcohol diphosphatase, manganese dependent) is a manganese-dependent glycoprophosphatase primarily responsible for the breakdown of molecules such as ADP-ribose, IDP-ribose, CDP-glycerol, CDP-choline and CDP-ethanolamine in the cell. The protein is predicted to be located in the cytoplasm and possesses 2',3'-cyclic nucleotide 2'-phosphodiesterase activity, manganese ion-binding activity, and pyrophosphatase activity. ADPRM plays an important role in embryonic development, particularly in the formation of the heart and lungs. In addition, ADPRM may be involved in immune cell signaling, acting as a second messenger for ADP-ribose to activate TRPM2, which in turn regulates oxidative/nitrosative stress.

## Storage

Storage:

Store at -20°C. Stable for one year after shipment.

Storage Buffer:

PBS with 0.02% sodium azide and 50% glycerol, pH7.3

Aliquoting is unnecessary for -20°C storage

For technical support and original validation data for this product please contact:

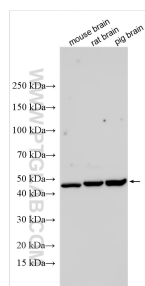
T: 4006900926

E: [Proteintech-CN@ptglab.com](mailto:Proteintech-CN@ptglab.com)

W: [ptgcn.com](http://ptgcn.com)

This product is exclusively available under Proteintech Group brand and is not available to purchase from any other manufacturer.

## Selected Validation Data



Various lysates were subjected to SDS PAGE followed by western blot with 17017-1-AP (C17orf48 antibody) at dilution of 1:2000 incubated at room temperature for 1.5 hours.