

For Research Use Only

# RPL10 Polyclonal antibody

Catalog Number: 17013-1-AP

6 Publications



## Basic Information

Catalog Number:

17013-1-AP

Concentration:

500 µg/ml

Source:

Rabbit

Isotype:

IgG

Immunogen Catalog Number:

AG9969

GenBank Accession Number:

BC003358

GeneID (NCBI):

6134

UNIPROT ID:

P27635

Full Name:

ribosomal protein L10

Calculated MW:

25 kDa

Observed MW:

25 kDa

Purification Method:

Antigen affinity purification

Recommended Dilutions:

WB 1:1000-1:6000

IHC 1:50-1:500

## Applications

Tested Applications:

WB, IHC, ELISA

Cited Applications:

WB, IHC, IF

Species Specificity:

human, mouse, rat

Cited Species:

human, mouse

**Note-IHC: suggested antigen retrieval with TE buffer pH 9.0; (\*) Alternatively, antigen retrieval may be performed with citrate buffer pH 6.0**

Positive Controls:

WB : HeLa cells, COLO 320 cells, mouse brain tissue, rat brain tissue

IHC : mouse brain tissue, human liver tissue

## Background Information

RPL10, also named as Large ribosomal subunit protein uL16, is a 214 amino acid protein, which belongs to the universal ribosomal protein uL16 family. RPL10 is a component of the large ribosomal subunit and is down-regulated during adipocyte, kidney, and heart differentiation. RPL10 shares 98% amino acid sequence with RPL10L, so RPL10 antibody is able to recognize RPL10 and RPL10L protein.

## Notable Publications

Author	Pubmed ID	Journal	Application
Kai Ma	35637200	Cell Discov	WB
Stephanie Herrlinger	31064784	Development	IF
Xinlu Liu	35303583	Transl Oncol	WB,IHC

## Storage

Storage:

Store at -20°C. Stable for one year after shipment.

Storage Buffer:

PBS with 0.02% sodium azide and 50% glycerol, pH7.3

Aliquoting is unnecessary for -20°C storage

For technical support and original validation data for this product please contact:

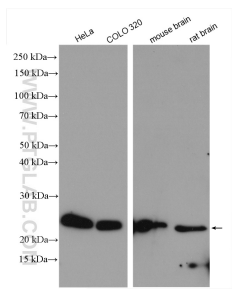
T: 4006900926

E: [Proteintech-CN@ptglab.com](mailto:Proteintech-CN@ptglab.com)

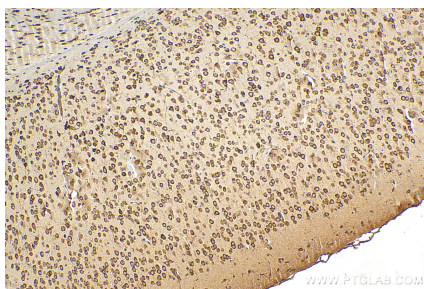
W: [ptgcn.com](http://ptgcn.com)

This product is exclusively available under Proteintech Group brand and is not available to purchase from any other manufacturer.

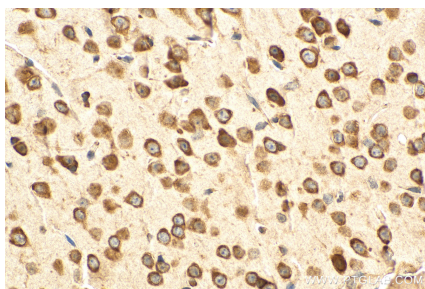
## Selected Validation Data



Various lysates were subjected to SDS PAGE followed by western blot with 17013-1-AP (RPL10 antibody) at dilution of 1:3000 incubated at room temperature for 1.5 hours.



Immunohistochemical analysis of paraffin-embedded mouse brain tissue slide using 17013-1-AP (RPL10 antibody) at dilution of 1:200 (under 10x lens). Heat mediated antigen retrieval with Tris-EDTA buffer (pH 9.0).



Immunohistochemical analysis of paraffin-embedded mouse brain tissue slide using 17013-1-AP (RPL10 antibody) at dilution of 1:200 (under 40x lens). Heat mediated antigen retrieval with Tris-EDTA buffer (pH 9.0).