

For Research Use Only

RECQL4 Polyclonal antibody

Catalog Number: 17008-1-AP

Featured Product

6 Publications



Basic Information

Catalog Number:

17008-1-AP

Size:

700 µg/ml

Source:

Rabbit

Isotype:

IgG

Immunogen Catalog Number:

AG10707

GenBank Accession Number:

BC013277

GeneID (NCBI):

9401

UNIPROT ID:

O94761

Full Name:

RecQ protein-like 4

Calculated MW:

1208 aa, 133 kDa

Observed MW:

145-150 kDa

Purification Method:

Antigen affinity purification

Recommended Dilutions:

WB 1:1000-1:5000

IP 0.5-4.0 µg for 1.0-3.0 mg of total protein lysate

IHC 1:50-1:500

IF 1:200-1:800

Applications

Tested Applications:

IF/ICC, IHC, IP, WB, ELISA

Cited Applications:

WB, IP, IF, IHC

Species Specificity:

human

Cited Species:

human

Note-IHC: suggested antigen retrieval with TE buffer pH 9.0; (*) Alternatively, antigen retrieval may be performed with citrate buffer pH 6.0

Positive Controls:

WB : HeLa cells, HepG2 cells

IP : HeLa cells,

IHC : human gliomas tissue, human kidney tissue

IF : HeLa cells,

Background Information

RECQ protein-like 4 (RECQL4), which has helicase domains contain 7 consensus motifs in the middle, is a gene responsible for Werner syndrome and Bloom syndrome. It forms a stable complex with UBR1 and UBR2, which has a DNA-stimulated ATPase activity. RECQL4 may involve in repairment of DNA damage by interaction with APE1 and FEN1, key participants in base excision repair. This is a rabbit polyclonal antibody raised against part of C-terminal of RECQL4 of human origin. The calculated molecular weight of RECQL4 is 133 kDa, but the modified RECQL4 protein is about 145-150 kDa.

Notable Publications

Author	Pubmed ID	Journal	Application
Jiewei Wang	34822842	J Biol Chem	WB
Sebastian Veith	31296950	Sci Rep	IF
Guosheng Lyu	33628589	Cancer Biol Med	IHC

Storage

Storage:

Store at -20°C. Stable for one year after shipment.

Storage Buffer:

PBS with 0.02% sodium azide and 50% glycerol pH 7.3.

Aliquoting is unnecessary for -20°C storage

For technical support and original validation data for this product please contact:

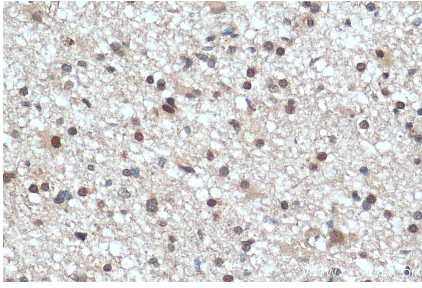
T: 4006900926

E: Proteintech-CN@ptglab.com

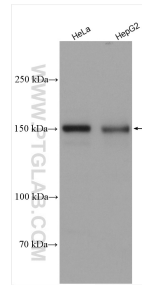
W: ptgcn.com

This product is exclusively available under Proteintech Group brand and is not available to purchase from any other manufacturer.

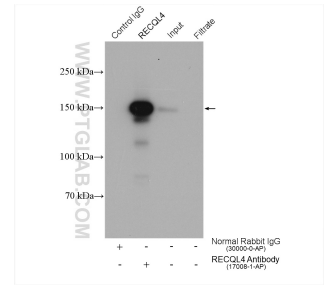
Selected Validation Data



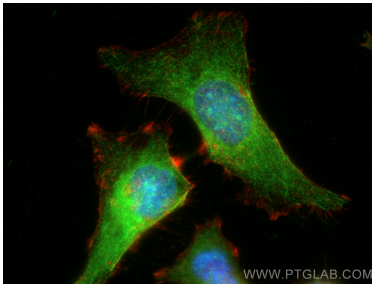
Immunohistochemical analysis of paraffin-embedded human gliomas tissue slide using 17008-1-AP (RECQL4 antibody) at dilution of 1:200 (under 40x lens). Heat mediated antigen retrieval with Tris-EDTA buffer (pH 9.0).



Various lysates were subjected to SDS PAGE followed by western blot with 17008-1-AP (RECQL4 antibody) at dilution of 1:2500 incubated at room temperature for 1.5 hours.



IP result of anti-RECQL4 (IP:17008-1-AP, 4ug; Detection:17008-1-AP 1:1000) with HeLa cells lysate 1880 ug.



Immunofluorescent analysis of (-20°C Ethanol) fixed HeLa cells using RECQL4 antibody (17008-1-AP) at dilution of 1:400 and CoraLite®488-Conjugated AffiniPure Goat Anti-Rabbit IgG(H+L), CL594-Phalloidin (red).