

MRPS15 Polyclonal antibody

Catalog Number: 17006-1-AP

13 Publications

Basic Information

Catalog Number:

17006-1-AP

Size:

550 µg/ml

Source:

Rabbit

Isotype:

IgG

Immunogen Catalog Number:

AG10702

GenBank Accession Number:

BC031336

GeneID (NCBI):

64960

UNIPROT ID:

P82914

Full Name:

mitochondrial ribosomal protein S15

Calculated MW:

257 aa, 30 kDa

Observed MW:

25-30 kDa

Purification Method:

Antigen affinity purification

Recommended Dilutions:

WB 1:500-1:2000

IP 0.5-4.0 µg for 1.0-3.0 mg of total protein lysate

IHC 1:20-1:200

IF 1:50-1:500

Applications

Tested Applications:

IF/ICC, IHC, IP, WB, ELISA

Cited Applications:

WB

Species Specificity:

human, mouse, rat

Cited Species:

human, mouse

Note-IHC: suggested antigen retrieval with TE buffer pH 9.0; (*) Alternatively, antigen retrieval may be performed with citrate buffer pH 6.0

Positive Controls:

WB : HeLa cells, mouse liver tissue, MCF-7 cells, Raji cells

IP : mouse brain tissue,

IHC : human spleen tissue,

IF : HepG2 cells,

Background Information

MRPS15, also named as RPMS15 or DC37, is a 257 amino acid protein, which belongs to the ribosomal protein S15P family. MRPS15 localizes in the Mitochondrion and is a component of the mitochondrial ribosome small subunit (28S) which comprises a 12S rRNA and about 30 distinct proteins. MRPS15 is involved into the mitochondrial proteins biosynthesis and ribosomal biogenesis.

Notable Publications

Author	Pubmed ID	Journal	Application
Ying Shu	36314841	EMBO J	WB
Luis Daniel Cruz-Zaragoza	34672953	Cell	WB
Ricarda Richter-Dennerlein	27693358	Cell	WB

Storage

Storage:

Store at -20°C. Stable for one year after shipment.

Storage Buffer:

PBS with 0.02% sodium azide and 50% glycerol pH 7.3.

Aliquoting is unnecessary for -20°C storage

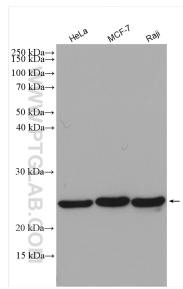
For technical support and original validation data for this product please contact:

T: 4006900926

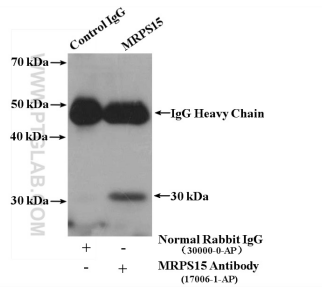
E: Proteintech-CN@ptglab.comW: ptgcn.com

This product is exclusively available under Proteintech Group brand and is not available to purchase from any other manufacturer.

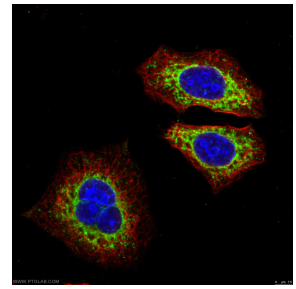
Selected Validation Data



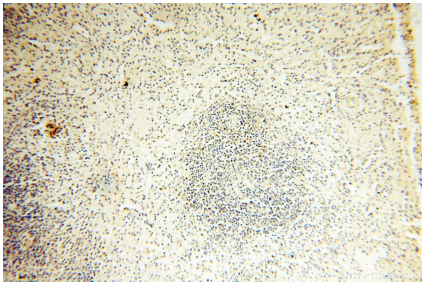
Various lysates were subjected to SDS PAGE followed by western blot with 17006-1-AP (MRPS15 antibody) at dilution of 1:1000 incubated at room temperature for 1.5 hours.



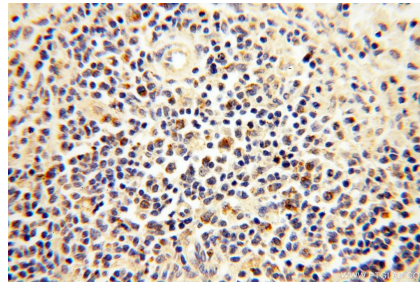
IP result of anti-MRPS15 (IP:17006-1-AP, 4ug; Detection:17006-1-AP 1:300) with mouse brain tissue lysate 3200 ug.



Immunofluorescent analysis of (-20°C Ethanol) fixed HepG2 cells using MRPS15 rabbit poly (17006-1-AP, Green) and KRT18 mouse mAb (66187-1-Ig, Red) at dilution of 1:50, further stained with Alexa Fluor 488-Conjugated AffiniPure Goat Anti-Rabbit IgG(H+L) for 17006-1-AP, and Alexa Fluor 594-conjugated AffiniPure Goat Anti-Mouse IgG (H+L) for 66187-1-Ig.



Immunohistochemical analysis of paraffin-embedded human spleen using 17006-1-AP (MRPS15 antibody) at dilution of 1:100 (under 10x lens).



Immunohistochemical analysis of paraffin-embedded human spleen using 17006-1-AP (MRPS15 antibody) at dilution of 1:100 (under 40x lens).