

For Research Use Only

TBC1D23 Polyclonal antibody

Catalog Number: 17002-1-AP **4 Publications**



Basic Information

Catalog Number:

17002-1-AP

Size:

450 µg/ml

Source:

Rabbit

Isotype:

IgG

Immunogen Catalog Number:

AG10697

GenBank Accession Number:

BC010221

GeneID (NCBI):

55773

UNIPROT ID:

Q9NUY8

Full Name:

TBC1 domain family, member 23

Calculated MW:

699 aa, 78 kDa

Observed MW:

70-78 kDa

Purification Method:

Antigen affinity purification

Recommended Dilutions:

WB 1:500-1:2000

IP 0.5-4.0 µg for 1.0-3.0 mg of total protein lysate

IHC 1:20-1:200

IF 1:50-1:500

Applications

Tested Applications:

IF/ICC, IHC, IP, WB, ELISA

Cited Applications:

WB, IF, IHC

Species Specificity:

human

Cited Species:

human

Note-IHC: suggested antigen retrieval with TE buffer pH 9.0; (*) Alternatively, antigen retrieval may be performed with citrate buffer pH 6.0

Positive Controls:

WB : HepG2 cells, HeLa cells

IP : HepG2 cells,

IHC : human liver tissue, human kidney tissue, human ovary tissue, human spleen tissue, human testis tissue

IF : HeLa cells,

Background Information

TBC1D23, also named as NS4ATP1, is a gene down-regulated by Pneumocystis infection. Pneumocystis pneumonia is a common opportunistic disease in AIDS patients. (PMID: 20377877) Recently it has been found that TBC1D23 gene is the most frequently mutated in MSI-H cell lines and protein expressions of TBC1D23 in tumors with mutation were down regulated.(PMID: 20824714) This antibody is specific to TBC1D23.

Notable Publications

Author	Pubmed ID	Journal	Application
Isaac Marin-Valencia	28823706	Am J Hum Genet	WB,IF
Ekaterina L Ivanova	28823707	Am J Hum Genet	IF
Yao Zhang	34363324	J Cell Mol Med	IHC,WB,IF

Storage

Storage:

Store at -20°C. Stable for one year after shipment.

Storage Buffer:

PBS with 0.02% sodium azide and 50% glycerol pH 7.3.

Aliquoting is unnecessary for -20°C storage

For technical support and original validation data for this product please contact:

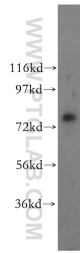
T: 4006900926

E: Proteintech-CN@ptglab.com

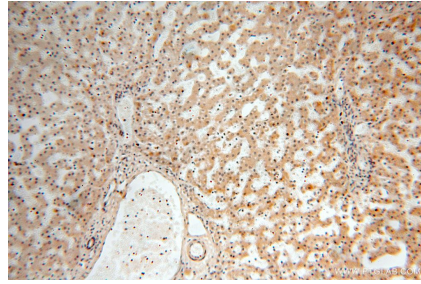
W: ptgcn.com

This product is exclusively available under Proteintech Group brand and is not available to purchase from any other manufacturer.

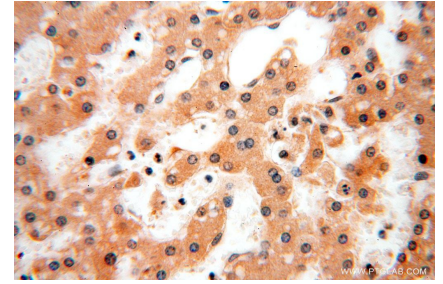
Selected Validation Data



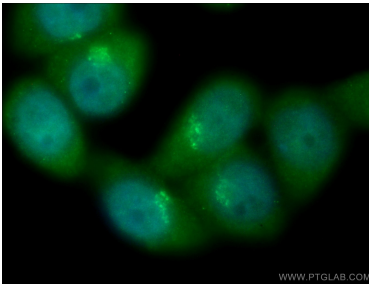
HepG2 cells were subjected to SDS PAGE followed by western blot with 17002-1-AP (TBC1D23 antibody) at dilution of 1:500 incubated at room temperature for 1.5 hours.



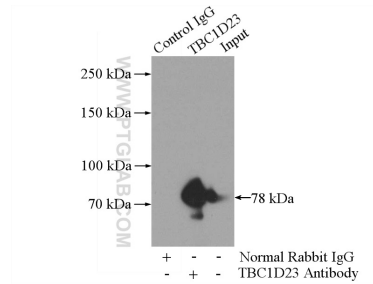
Immunohistochemical analysis of paraffin-embedded human liver using 17002-1-AP (TBC1D23 antibody) at dilution of 1:100 (under 10x lens).



Immunohistochemical analysis of paraffin-embedded human liver using 17002-1-AP (TBC1D23 antibody) at dilution of 1:100 (under 40x lens).



Immunofluorescent analysis of (4% PFA) fixed HeLa cells using 17002-1-AP (TBC1D23 antibody) at dilution of 1:50 and CoraLite488-Conjugated AffiniPure Goat Anti-Rabbit IgG(H+L).



IP result of anti-TBC1D23 (IP:17002-1-AP, 4ug; Detection:17002-1-AP 1:500) with HepG2 cells lysate 2400ug.